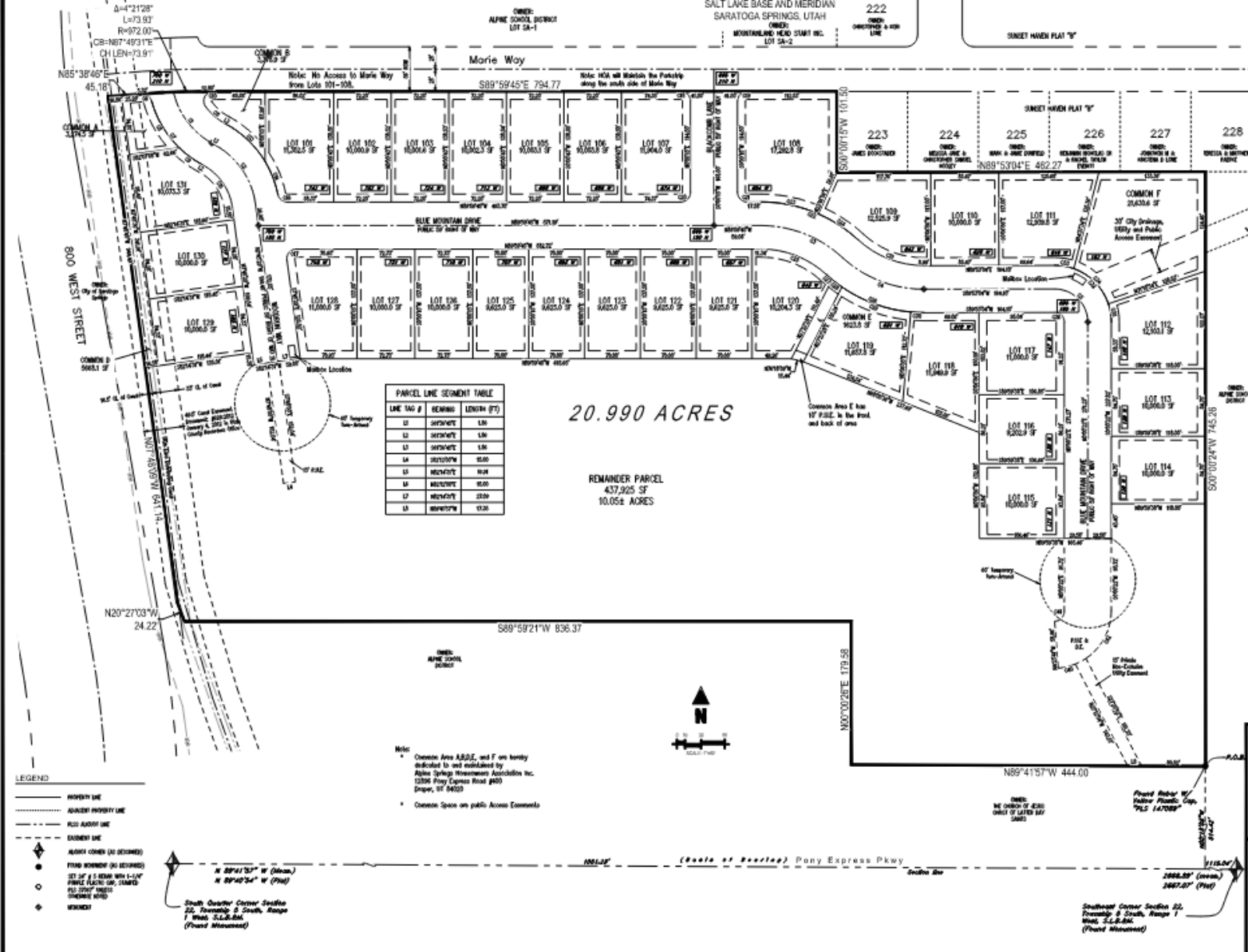


ALPINE SPRINGS SUBDIVISION PLAT A

LOCATED IN THE SOUTHEAST CORNER OF SECTION 22,
TOWNSHIP 5 SOUTH, RANGE 1 WEST,
SALT LAKE BASE AND MERIDIAN
SARATOGA SPRINGS, UTAH



PARCEL LINE SEGMENT TABLE

LINE TAG #	BEARING	LENGTH (FT)
11	S62°04'00" E	1.00
12	S26°04'00" E	1.00
13	S26°04'00" E	1.00
14	S26°04'00" E	1.00
15	S26°04'00" E	1.00
16	S26°04'00" E	1.00
17	S26°04'00" E	1.00
18	S26°04'00" E	1.00

20.990 ACRES
REMAINDER PARCEL
437,925 SF
10.054 ACRES

- LEGEND**
- PROPERTY LINE
 - ADJACENT PROPERTY LINE
 - ASST ADJACENT LINE
 - EXHIBIT LINE
 - ALREADY CORNER (AS REQUIRED)
 - FOUND MONUMENT (AS REQUIRED)
 - SET OF 5 METERS WITH 1-1/4" PINKE PLASTIC CAP, STAMPED "PL 1202" (NEEDS TO BE RE-SET)
 - MONUMENT

South Quarter Corner Section 22, Township 5 South, Range 1 West, S.L.B.M. (Found Monument)

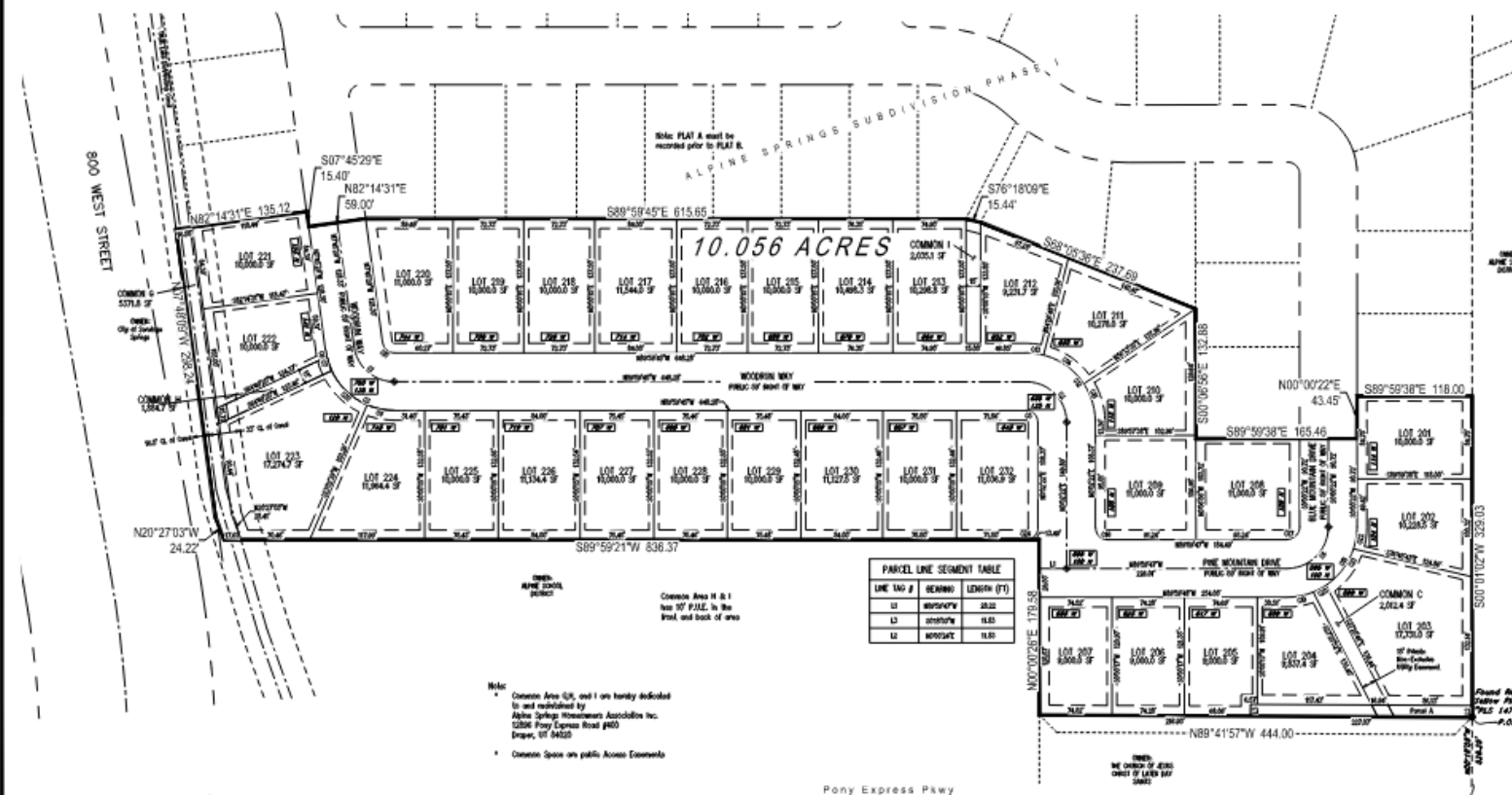
ALPINE SPRINGS SUBDIVISION PLAT A
THE NORTH PART OF LOT 50 ALPINE SCHOOL DISTRICT - WEST SARATOGA SPRINGS (MINOR SUBDIVISION)
LOCATED IN THE SOUTHEAST CORNER OF SECTION 22, TOWNSHIP 5 SOUTH, RANGE 1 WEST SALT LAKE BASE AND MERIDIAN SARATOGA SPRINGS, UTAH COUNTY, UTAH

PREPARED BY
Galloway
103 W. Pleasant Grove Blvd., Suite 1
Pleasant Grove, UT 84062
801-992-1332
GallowayJL.com

ALPINE SPRINGS SUBDIVISION PLAT B

LOCATED IN THE SOUTHEAST CORNER OF SECTION 22,
TOWNSHIP 5 SOUTH, RANGE 1 WEST,
SALT LAKE BASE AND MERIDIAN
SARATOGA SPRINGS, UTAH

PARCEL CURVE SEGMENT TABLE					
CURVE TAG #	DELTA	LENGTH (FT)	RADIUS (FT)	CHORD BEARING	CHORD LENGTH (FT)
01	127°42'	19.24	41.81	S45°27'42"E	19.24
02	107°27'	45.21	41.81	S45°27'42"E	19.21
03	127°42'	19.24	41.81	S45°27'42"E	19.24
04	107°27'	45.21	41.81	S45°27'42"E	19.21
05	107°27'	15.38	41.81	S45°27'42"E	15.38
06	112°32'	4.47	71.81	S52°32'12"E	4.47
07	127°42'	15.38	71.81	S45°27'42"E	15.38
08	47°48'	19.27	71.81	S45°27'42"E	19.27
09	127°42'	15.38	71.81	S45°27'42"E	15.38
10	127°42'	17.22	41.81	S45°27'42"E	17.22
11	107°27'	11.67	71.81	S45°27'42"E	11.64
12	107°27'	17.22	71.81	S45°27'42"E	17.22
13	47°48'	19.27	71.81	S45°27'42"E	19.27
14	47°48'	19.27	71.81	S45°27'42"E	19.27
15	107°27'	45.21	71.81	S45°27'42"E	45.21
16	107°27'	15.38	41.81	S45°27'42"E	15.38
17	107°27'	23.42	41.81	S45°27'42"E	23.42
18	107°27'	15.38	41.81	S45°27'42"E	15.38
19	107°27'	27.89	71.81	S45°27'42"E	27.82
20	107°27'	15.38	71.81	S45°27'42"E	15.38
21	107°27'	45.21	71.81	S45°27'42"E	45.21
22	107°27'	22.87	71.81	S45°27'42"E	22.87
23	107°27'	15.38	41.81	S45°27'42"E	15.38



LINE TAG #	BEARING	LENGTH (FT)
L1	N89°59'21"W	20.22
L2	S89°59'21"W	11.63
L3	N89°59'21"W	11.63

Note:
Common Area (C/A), and I on hereby dedicated to and established by Alpine Springs Homeowners Association Inc. 12006 Pony Express Road #400 Draper, UT 84020
Common Open on public Access Easements

PREPARED BY:
PROJECT NUMBER: F20010001
DRAWN BY: RJA
CHECKED BY: RJA
DATE: 05/06/2010
FILE IN: 42000001-Subdiv
Checked by: RJA PLS 147008
P.O.B.

- LEGEND
- PROPERTY LINE
 - ADJACENT PROPERTY LINE
 - PLS ADJOURN LINE
 - EASEMENT LINE
 - ALREADY CORNER (AS DEPICTED)
 - FOUND MONUMENT (AS DEPICTED)
 - SET UP 1/2 IRON WITH 1-1/2" PINEAPPLE FLANGE OR, STAMPED PL 1/2" IRON WITH 1-1/2" PINEAPPLE FLANGE
 - MONUMENT



ALPINE SPRINGS SUBDIVISION PLAT B
THE NORTH PART OF LOT 30 ALPINE SCHOOL DISTRICT - WEST SARATOGA SPRINGS (MINOR SUBDIVISION)
LOCATED IN THE SOUTHEAST CORNER OF SECTION 22, TOWNSHIP 5 SOUTH, RANGE 1 WEST SALT LAKE BASE AND MERIDIAN SARATOGA SPRINGS, UTAH COUNTY, UTAH

PREPARED BY
Galloway
105 W. Pleasant Grove Blvd., Suite B
Pleasant Grove, UT 84062
801-462-1332
Galloway.com

IADU PETITION

The following plat owners sign stating that it is their will to include IADUs in Alpine Springs.

<u>Plat Owners</u>	<u>Owner Representative</u>	<u>Signature</u>
FieldStone Homes	Robert Lusk	