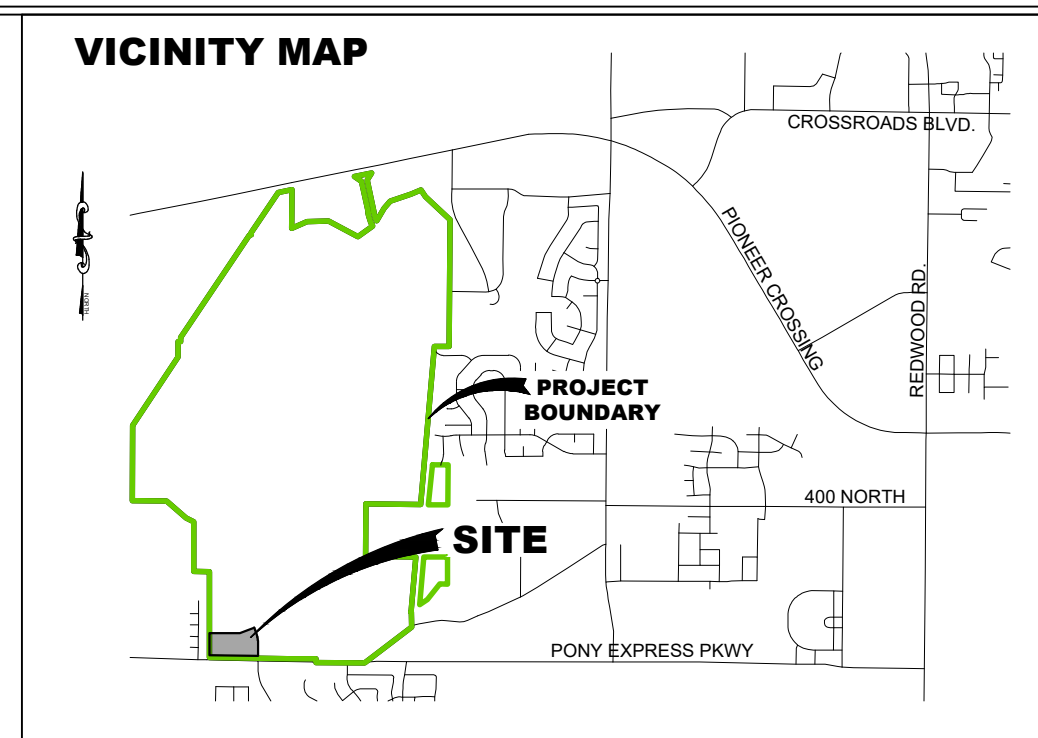
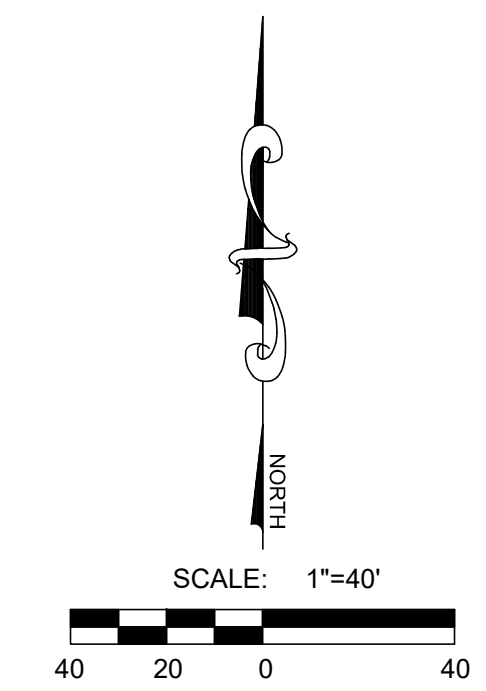


QUAILHILL @ MT. SARATOGA WEST COMMERCIAL PAD

LOCATED IN A PORTION OF THE SOUTHWEST QUARTER OF SECTION 21,
TOWNSHIP 5 SOUTH, RANGE 1 WEST, SALT LAKE BASE AND MERIDIAN
CITY OF SARATOGA SPRINGS, UTAH COUNTY, UTAH



LEI
- A Utah Corporation -
**ENGINEERS
SURVEYORS
PLANNERS**
3302 N. Main Street
Spanish Fork, UT 84660
Phone: 801.798.0555
Fax: 801.798.9393
office@lei-eng.com
www.lei-eng.com

TABLE OF CONTENTS

COVER	OVERALL LAYOUT
NOTES	GENERAL NOTES
	FINAL PLAT
SHEET 101	EXISTING CONDITIONS & DEMOLITION PLAN
SHEET 102	SITE PLAN
SHEET 201	UTILITY PLAN
SHEET 301	GRADING PLAN & DRAINAGE PLAN
SHEET 401	WEST COMMERCIAL PONY EXPRESS LIP PLAN AND PROFILE - 0+20 - 9+00
SHEET 501	SIGNAGE AND STRIPING PLAN
SHEET 601	SENSITIVE LANDS PLAN
SHEET DT-1	DETAILS
SHEET DT-2	DETAILS
SHEET DT-3	DETAILS
LP-100 - LP-501	LANDSCAPE PLANS
IRR-100 - IRR-504	IRRIGATION PLANS

TABULATIONS

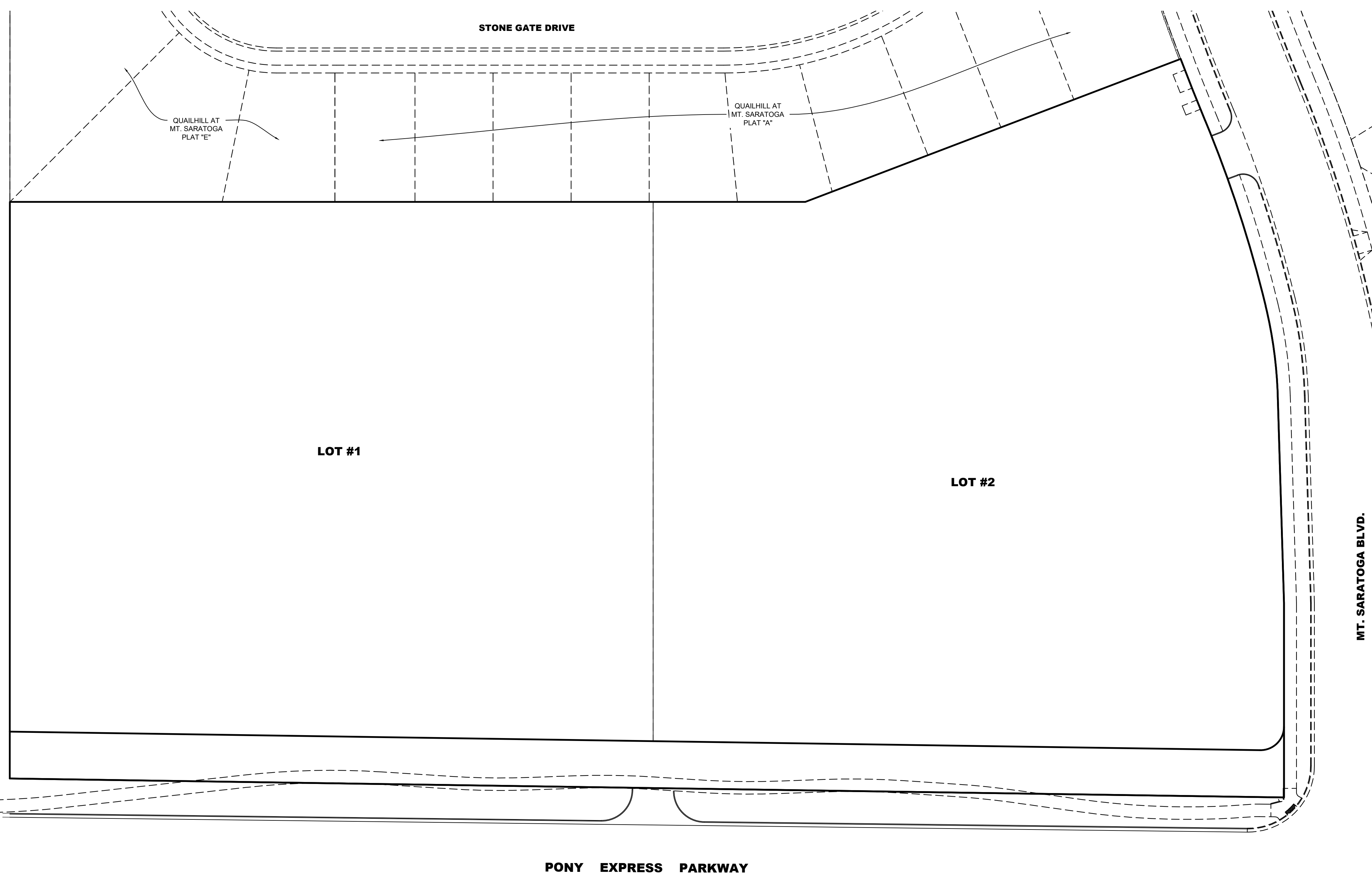
PLAT COMMERCIAL WEST

LOTS 2 LOTS

DENSITY 0.27/ACRE LOTS/ACRE

	ACRES	SQ. FT.	PERCENT
TOTAL PROJECT AREA	7.27	316770	100%
RIGHT-OF-WAY AREA	0.56	24532.7	7.7%
LOT AREA	6.71	292237.5	92.3%
OPEN SPACE AREA	0	0	0%
SENSITIVE LANDS	0.00	0	0%
NON SENSITIVE LANDS	0.00	0	0%
BUILDABLE LAND	7.27	316770.20	100%
LANDSCAPE AREA	0.00	0.00	0%
HARDSCAPE AREA	0.00	0.00	0%

EXISTING	PROPOSED	DETAILS
---	---	BOUNDARY LINE
---	---	STREET CENTERLINE
---	---	EASEMENT LINE
---	---	LOT LINES
---	---	SEWER PIPE
---	---	SEWER MANHOLE
---	---	4" SEWER SERVICE
---	---	STORM DRAIN PIPE
---	---	STORM DRAIN MANHOLE
---	---	CURB INLET
---	---	COMBO BOX
---	---	4"x4" CATCH BASIN
---	---	3"x3" CATCH BASIN
---	---	INLET/OUTLET W/ GRATE
---	---	CULINARY WATER PIPE
---	---	45" PIPE ELBOW (W)
---	---	22.5" PIPE ELBOW (W)
---	---	11.25" PIPE ELBOW (W)
---	---	FIRE HYDRANT
---	---	3/4" SERVICE & METER (W)
---	---	PRV (W)
---	---	AIR-VAC VALVE (W)
---	---	2" BLOW-OFF (W)
---	---	VALVE (W & SW)
---	---	TEE
---	---	CROSS
---	---	SECONDARY WATER PIPE
---	---	45" PIPE ELBOW (SW)
---	---	22.5" PIPE ELBOW (SW)
---	---	11.25" PIPE ELBOW (SW)
---	---	1" SINGLE SW SERVICE
---	---	1-1/2" DUAL SW SERVICE
---	---	SW SERVICE TO PARKS
---	---	AIR-VAC VALVE (SW)
---	---	BACKFLOW PREVENTER
---	---	2" BLOW-OFF (SW)
---	---	30" C&G (COLLECTOR)
---	---	24" C&G (LOCAL)
---	---	24" SHED C&G
---	---	SIDEWALK
---	---	STOP SIGN
---	---	STREET SIGN
---	---	MONUMENT
---	---	SPRINKLER CONDUIT
---	---	FENCE
---	---	STREET LIGHT COLLECTOR
---	---	STREET LIGHT LOCAL
---	---	STREET LIGHT ARTERIAL
---	---	POWER POLE
---	---	DITCH
---	---	FIBER OPTIC
---	---	GAS
---	---	OVERHEAD POWER
---	---	SILT FENCE
---	---	FLOW ARROW
---	---	CONTOURS
---	---	100 YEAR FLOOD ROUTE
---	---	MATCH LINE
---	---	DRIVE APPROACH
---	---	ADA RAMP
---	---	TRAIL



NOT FOR
CONSTRUCTION

MT. SARATOGA WEST COMMERCIAL PAD
SARATOGA SPRINGS, UTAH
COVER - WEST COMMERCIAL PAD

REVISIONS

1	
2	
3	
4	
5	

SARATOGA SPRINGS CITY ENGINEERING DEPARTMENT
CITY ENGINEER - JEREMY LAPIN, PE
JLAPIN@SARATOGASPRINGCITY.COM
(801) 766-6506

SARATOGA SPRINGS CITY PLANNING DEPARTMENT
PLANNING DIRECTOR - DAVID STROUD
DSTROUD@SARATOGASPRINGCITY.COM
(801) 766-9793

OWNER / DEVELOPER
EDGE HOMES
13702 S 200 W B12
DRAPER, UTAH 84020
801-494-0150

ENGINEER
LEI CONSULTING ENGINEERS
AND SURVEYORS
3302 NORTH MAIN
SPANISH FORK, UTAH 84660
(801)798-0555

DOMINION ENERGY GAS
CUSTOMER SERVICE
1-800-323-5517

ROCKY MOUNTAIN POWER
CUSTOMER SERVICE
1-877-221-7070

LEI PROJECT #:
2014-1664

DRAWN BY:
CJI

DESIGNED BY:
NKW

SCALE:
1"=40'

DATE:
10/03/2022

SHEET



U:\LAND DESKTOP PROJECTS\1415-1664 MT. SARATOGA\DWG\1415-1664 MT. SARATOGA WEST COMMERCIAL PAD.FINAL.DWG 10/30/22 10:54 AM