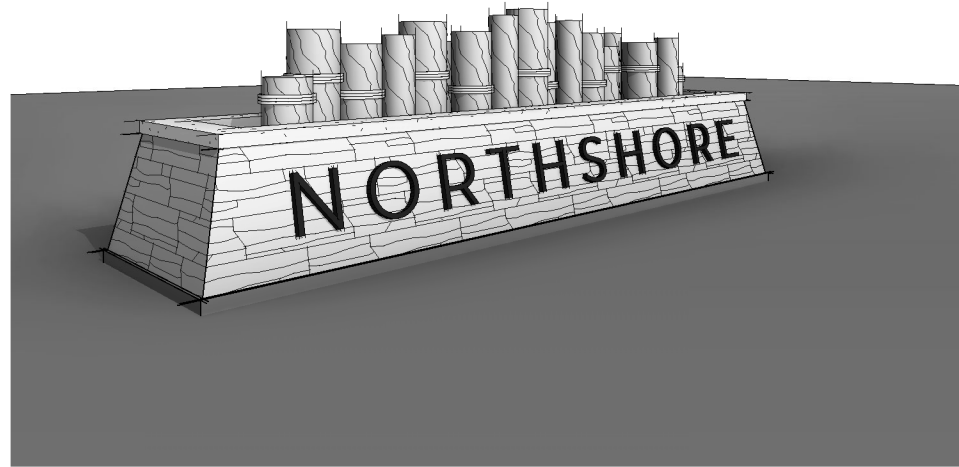


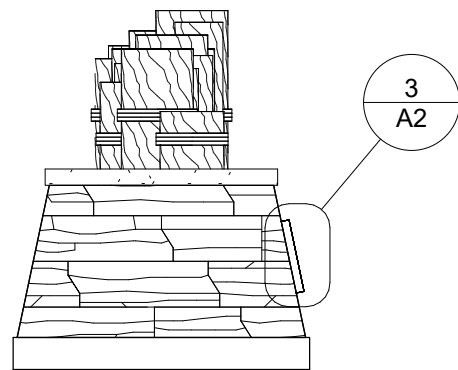
3 BACKLIT LETTERING
1/2" = 1'-0"



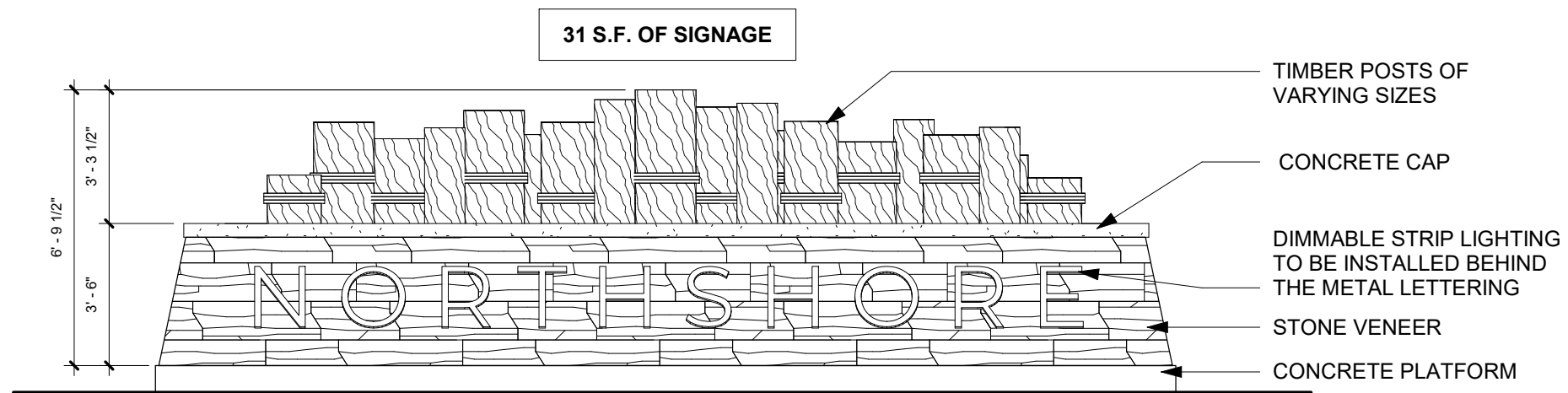
4 3D VIEW

GENERAL LIGHTINING NOTES

- FLOODLIGHTS ARE PROHIBITED
- ALL STRIP LIGHTING TO BE DIMMABLE
- ALL LIGHT SOURCES TO BE HIDDEN FROM VIEW
- LIGHTING COLOR SHALL BE SOFT WHITE OR AMBER
- BULBS MAY NOT EXCEED 4000K
- ALL LIGHTING FIXTURES TO BE OF THE FULL CUTOOF VARIETY
- SHOEBOX FIXTURES ARE PROHIBITED
- LIGHTING TO BE AUTOMATED ON PHOTOCCELL
- SEE LIGHTING SPEC SHEET FOR DETAILS
- LIGHTING TO BE ACTIVE ONLY FROM DUSK TO DAWN.
- 0-0.9 FOOT CANDLE MEASUREMENT.



2 LEFT ELEVATION - SIGNAGE DIAGRAM
1/4" = 1'-0"



1 FRONT ELEVATION - SIGNAGE DIAGRAM
1/4" = 1'-0"

NORTHSHORE

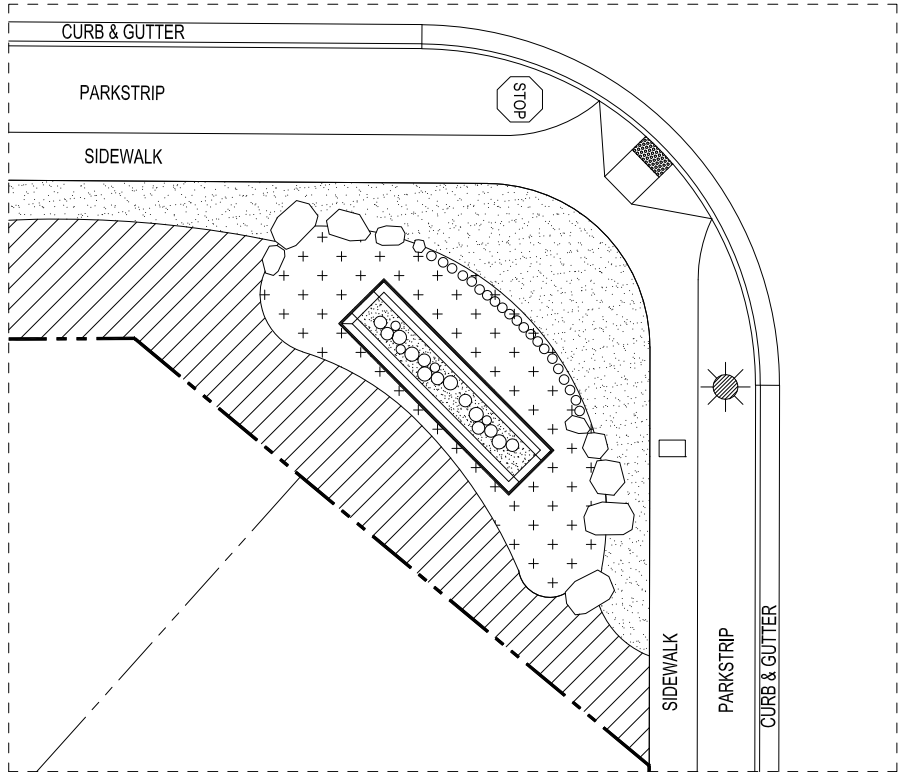
**NORTHSORE POST CORNER MONUMENT
SIGNAGE & LIGHTING DIAGRAM**

D·R·HORTON
America's Builder

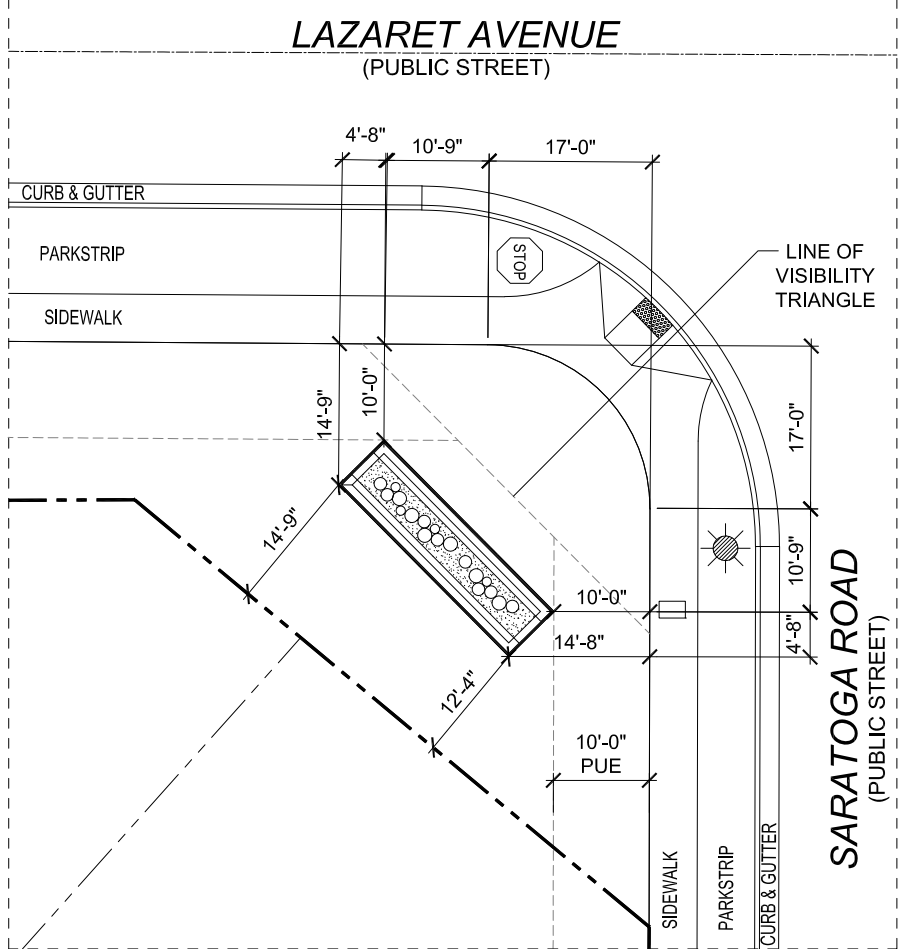
12351 S. Gateway Park Place, Suite D100, Draper, UT 84020 Phone (801) 571-7101 Fax (801) 571-7102
Copyright: Reproduction of any portion of these plans for any purpose is strictly prohibited per DR Horton Custom Homes
THESE DRAWINGS ARE THE PROPERTY OF D.R. HORTON AMERICA'S BUILDER AND ARE INTENDED FOR USE
ONE TIME ONLY IN THE LOCATION AS INDICATED IN THE DRAWINGS. THE USE OF CONSTRUCTION
DOCUMENTS IS PROTECTED BY THE STATE LAW. ADDITIONAL USE OF THESE DRAWINGS IN WHOLE OR IN
PART WITHOUT WRITTEN PERMISSION IS STRICTLY PROHIBITED.

All subcontractors working on this project take full liability of these plans and shall thoroughly review and verify all dimensions, locations, notes, etc. prior to starting any stage of construction.

LANDSCAPE PLAN



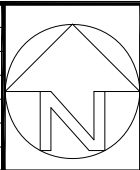
SITE PLAN



POST CORNER MONUMENT

COMMUNITY:	NORTHSHORE - PLAT A3
PLAN:	NORTHSHORE POST CORNER MONUMENT (TYPICAL)
SCALE:	1" = 20'-0"
ADDRESS:	LAZARET AVENUE & SARATOGA ROAD
DATE:	FEBRUARY, 2023
NOTES:	

NOTES:	
UPDATED MONUMENT FOOTPRINT	



D.R. HORTON
America's Builder

12551 S. GATEWAY PARK PLACE, SUITE D100, DRAPER UTAH 84020
Phone (801) 571-7101 Fax (801) 571-7102