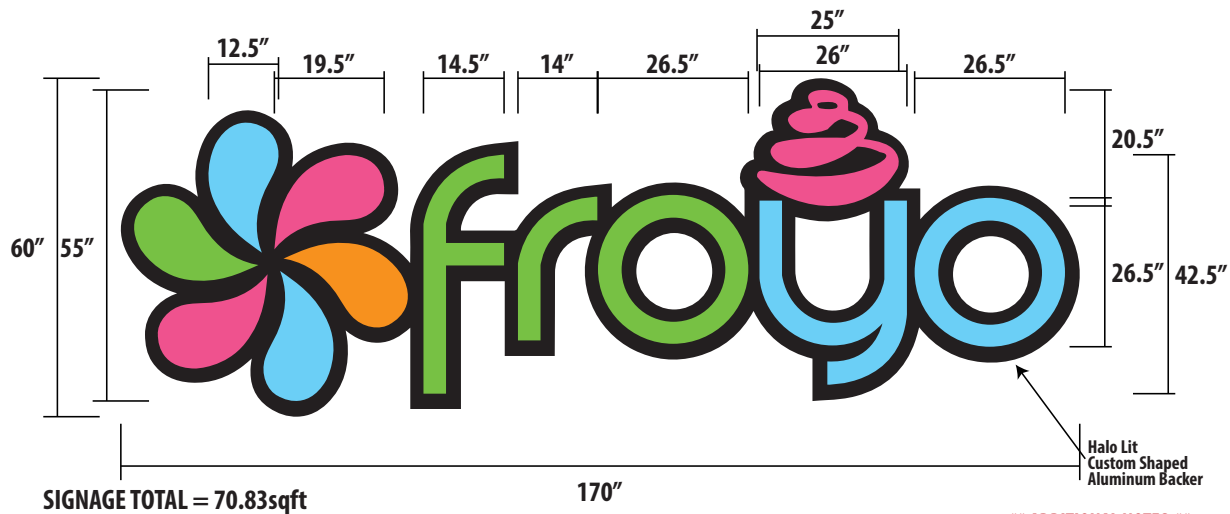


**SIGN A**



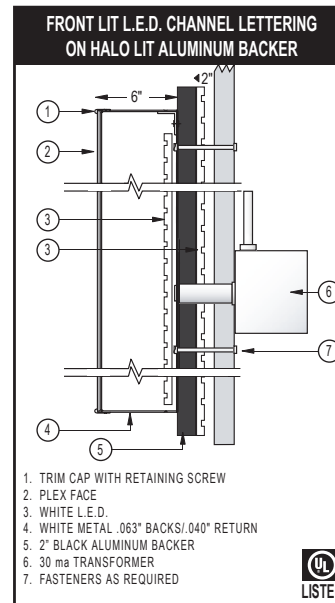
**SIGNAGE TOTAL = 70.83sqft**

**170"**

**\*\* ADDITIONAL NOTES \*\***

- LAMP COLOR WILL NOT EXCEED 4000K
- ILLUMINATION WILL NOT EXCEED 2 FOOT-CANDLES MEASURED AT 1-FOOT FROM SIGN SURFACE
- HOURS OF ILLUMINATION DURING, AND UP TO 30-MINUTES AFTER HOURS OF OPERATION ONLY

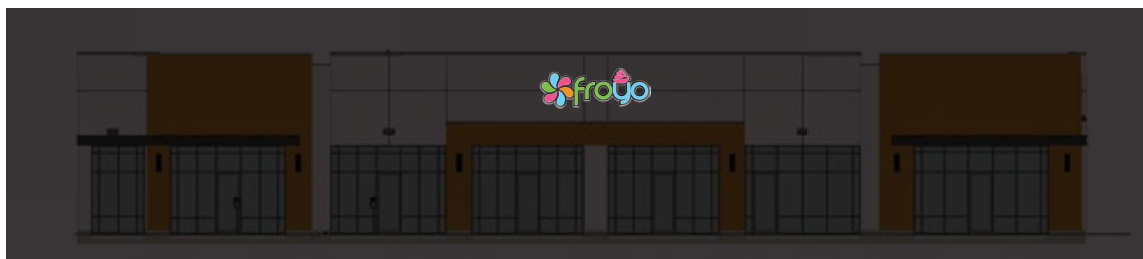
**South Elevation**



**FACADE TOTAL = 936sqft**  
**ALOTTED SIGNAGE = 74.88sqft (8%)**



**NIGHT VIEW**



**MATERIAL:** 170" x 60" Front Lit LED Channel Lettering  
**FINISH:** Channel Lettering mounted to Custom Shaped Aluminum Backer



**801.796.1411**

1584 South 580 East, American Fork, 84003  
 www.GoNotatek.com

**CUSTOMER:**

FroYo Frozen Yogurt

**WORK ORDER#:**

83917

**QTY:**

1

**Sales Rep:**

Keith Johnson

**Designer:**

Matt Peterson

**Preferred Shipping Method:**

- Shipping
- Delivery
- Pick Up

**Shipping via UPS Ground:**

**APPROVAL:**

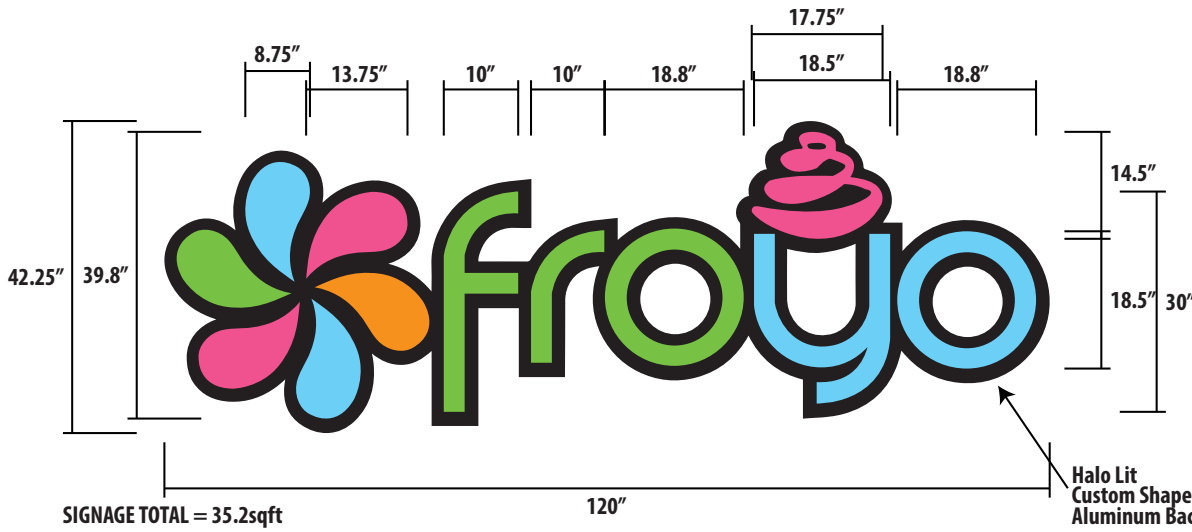
Client Approval .....  
 Landlord Approval .....

© COPYRIGHT 2019, BY NOTATEK - ALL DESIGNS PRESENTED ARE THE SOLE PROPERTY OF NOTATEK, AND MAY NOT BE REPRODUCED IN PART OR WHOLE WITHOUT WRITTEN CONSENT FROM NOTATEK.

THE COLORS SHOWN ARE ONLY APPROXIMATED ON ANY COMPUTER MONITOR, INKJET, OR LASER PRINTER. THE FINAL PRODUCT MAY VARY SLIGHTLY IN COLOR FROM YOUR COMPUTER MONITOR TO PRINT.

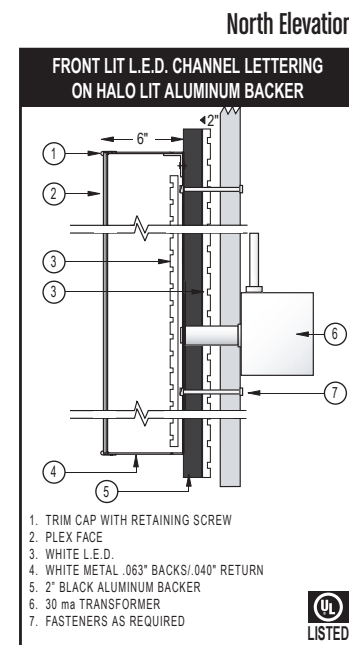


**SIGN B**



**\*\* ADDITIONAL NOTES \*\***

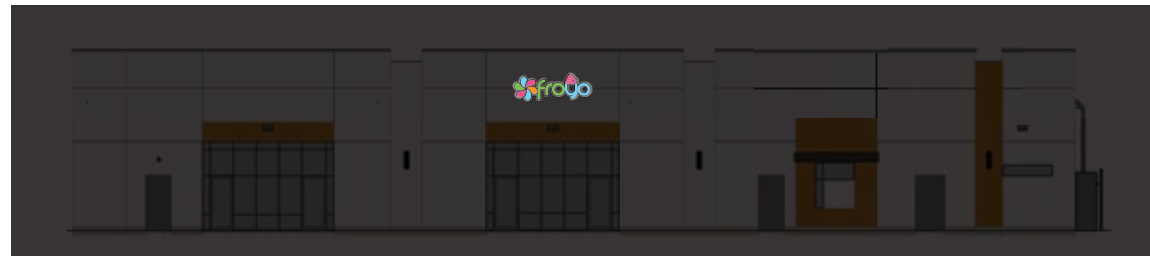
- LAMP COLOR WILL NOT EXCEED 4000K
- ILLUMINATION WILL NOT EXCEED 2 FOOT-CANDLES MEASURED AT 1-FOOT FROM SIGN SURFACE
- HOURS OF ILLUMINATION DURING, AND UP TO 30-MINUTES AFTER HOURS OF OPERATION ONLY



FACADE TOTAL = 936sqft  
ALOTTED SIGNAGE = 35.415sqft (50% of Main Signage)



**NIGHT VIEW**



**MATERIAL:** 120" x 42.25" Front Lit LED Channel Lettering  
**FINISH:** Channel Lettering mounted to Custom Shaped Aluminum Backer



801.796.1411

1584 South 580 East, American Fork, 84003

www.GoNotatek.com

**CUSTOMER:**

FroYo Frozen Yogurt

**WORK ORDER#:**

83917

**QTY:**

1

**Sales Rep:**

Keith Johnson

**Designer:**

Matt Peterson

**Preferred Shipping Method:**

- Shipping
- Delivery
- Pick Up

**Shipping via UPS Ground:**

**APPROVAL:**

Client Approval

Landlord Approval

© COPYRIGHT 2019, BY NOTATEK - ALL DESIGNS PRESENTED ARE THE SOLE PROPERTY OF NOTATEK, AND MAY NOT BE REPRODUCED IN PART OR WHOLE WITHOUT WRITTEN CONSENT FROM NOTATEK.

THE COLORS SHOWN ARE ONLY APPROXIMATED ON ANY COMPUTER MONITOR, INKJET, OR LASER PRINTER. THE FINAL PRODUCT MAY VARY SLIGHTLY IN COLOR FROM YOUR COMPUTER MONITOR TO PRINT.



1367 N Exchange Dr  
Saratoga Springs, UT 84045



**MATERIAL:**  
**FINISH:**



801.796.1411

1584 South 580 East, American Fork, 84003

www.GoNotatek.com

**CUSTOMER:**

FroYo Frozen Yogurt

**WORK ORDER#:** 83917

**QTY:** 2

**Sales Rep:** Keith Johnson  
**Designer:** Matt Peterson

**Preferred Shipping Method:**

- Shipping
- Delivery
- Pick Up

**Shipping via UPS Ground:**

**APPROVAL:**

Client Approval .....

Landlord Approval .....

© COPYRIGHT 2019, BY NOTATEK - ALL DESIGNS PRESENTED ARE THE SOLE PROPERTY OF NOTATEK, AND MAY NOT BE REPRODUCED IN PART OR WHOLE WITHOUT WRITTEN CONSENT FROM NOTATEK.

THE COLORS SHOWN ARE ONLY APPROXIMATED ON ANY COMPUTER MONITOR, INKJET, OR LASER PRINTER. THE FINAL PRODUCT MAY VARY SLIGHTLY IN COLOR FROM YOUR COMPUTER MONITOR TO PRINT.

