



FRONT ELEVATION

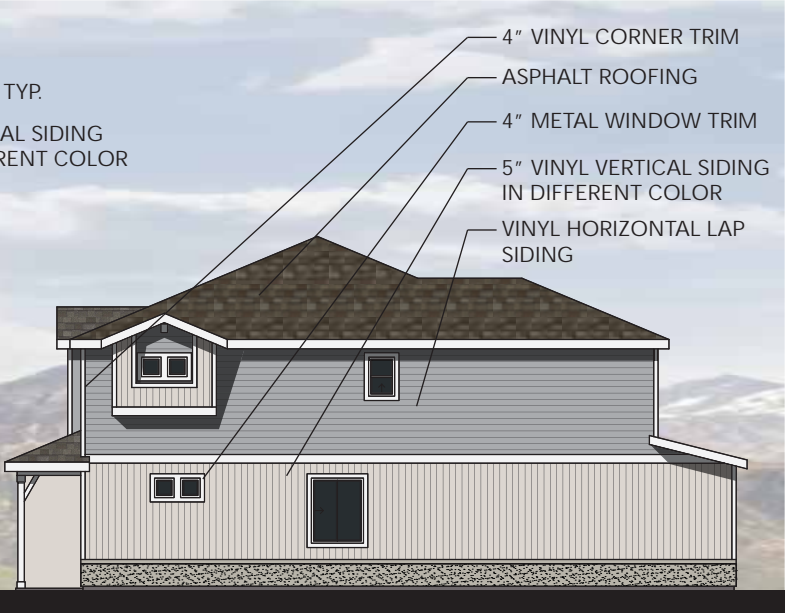


REAR ELEVATION

- ARCHITECTURAL DESIGN STANDARDS, GENERAL (16.16.01)
- BUILDING ARTICULATION (ELEVATION SHIFTS/STEPS PLUS 2 ADDITIONAL ITEMS)
2 FRONT POPOUT ELEVATION SHIFTS THAT CREATE SHADOW LINES AND VOLUMETRIC CHANGES
TWO ADDITIONAL ITEMS REQUIRED (THREE SHOWN):
 - PRIMARY MATERIAL CHANGE - THREE MATERIAL CHANGES (VERTICAL SIDING, HORIZONTAL LAP SIDING, STUCCO)
 - COVERED ENTRY PORCHES
 - 3 GABLE ROOF ELEMENTS
 - ROOF TREATMENT: ALL ROOFS ARE 4:12 PITCH WITH 12" SOFFITS
 - WINDOWS: 4" WINDOW/DOOR TRIM
 - AWNINGS, CANOPIES, TRELLISES ETC: NOT APPLICABLE



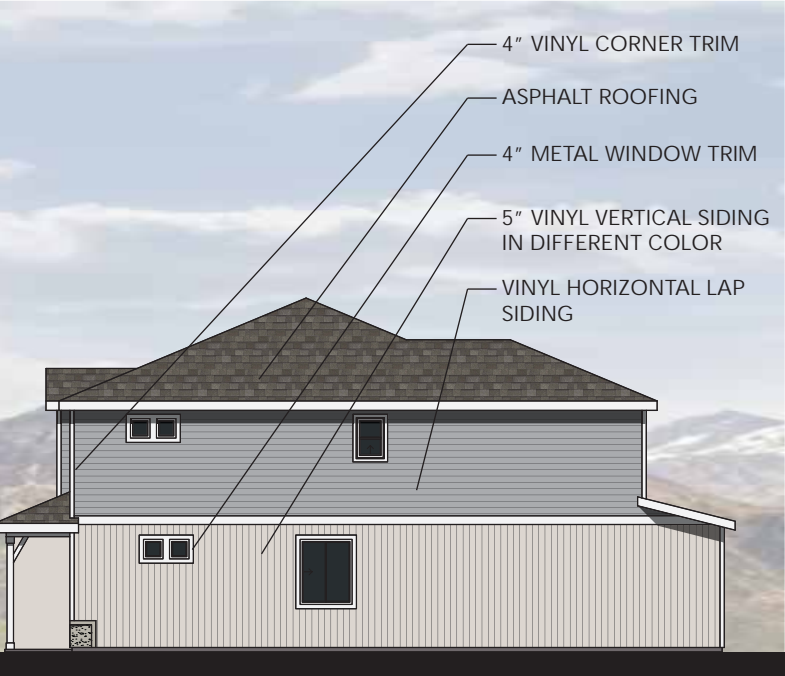
LEFT ELEVATION
ENHANCED



RIGHT ELEVATION
ENHANCED



LEFT ELEVATION



RIGHT ELEVATION

- ARCHITECTURAL DESIGN STANDARDS, RESIDENTIAL (16.16.02)
- ARCHITECTURAL WRAP
 - ALL STUCCO WAINSCOTS AND FRONT MATERIALS WRAP TO ADJACENT INTERIOR FACADE PLANES
 - ALL STUCCO WAINSCOTS AND MATERIALS EXTEND THE FULL DEPTH OF THE ELEVATION ON ENHANCED SIDES INTENDING TO FACE COMMON OPEN SPACE
 - MATERIALS AND COLORS
 - FRONT ELEVATIONS & ENHANCED SIDE ELEVATIONS SHOW 3 COLORS PLUS A TRIM COLOR (BODY, ACCENT, AND STUCCO ACCENT).
NON-ENHANCED SIDE ELEVATIONS SHOW 2 COLORS (BODY AND ACCENT)
 - MATERIALS HAVE BEEN USED SO THAT NO MATERIAL DOMINATES MORE THAN 75% OF FACADES
 - COLOR VARIATION: ALL BUILDING TYPES WILL INCORPORATE MORE THAN 4 COLOR VARIATIONS
- LIGHTING DESIGN STANDARDS, RESIDENTIAL (19.11)
- ALL LIGHTING FIXTURES ARE LED FIXTURES, RECESSED IN SOFFITS AND FACING STRAIGHT DOWNWARD. COLOR TEMPERATURE WILL BE 2700K - 3900K.

Color depictions vary among computers and printers. Refer to actual material samples for accurate material depictions.

ASCENT DUETS - WANDER - CONTEMPORARY HOMESTEAD ELEVATION
BUILDING TYPE 1

OAKWOOD HOMES

Exterior specifics, colors and options are subject to change without notice. Exterior renderings are artist conceptions. ©2018 Oakwood Homes

REVISED 12/20/2023

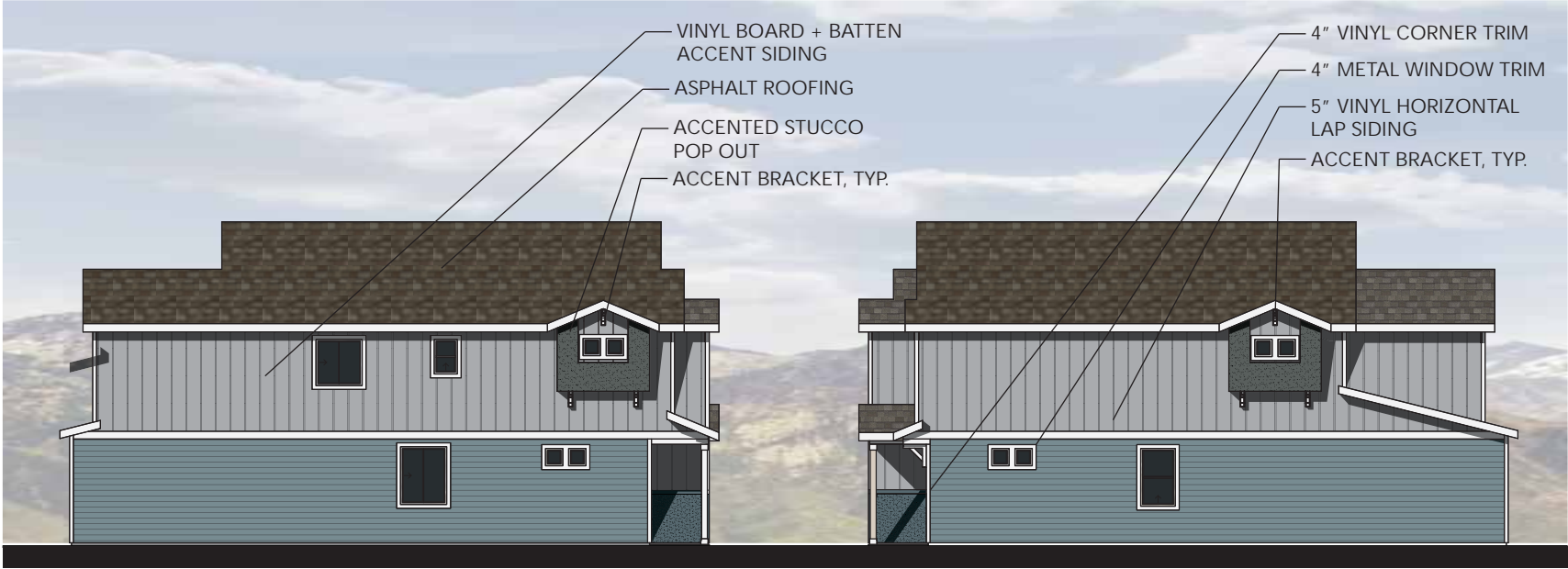


FRONT ELEVATION



REAR ELEVATION

- ARCHITECTURAL DESIGN STANDARDS, GENERAL (16.16.01)
- BUILDING ARTICULATION (ELEVATION SHIFTS/STEPS PLUS 2 ADDITIONAL ITEMS)
 - 3 FRONT POPOUT ELEVATION SHIFTS PLUS A TOWER ELEMENT THAT CREATE SHADOW LINES AND VOLUMETRIC CHANGES TWO ADDITIONAL ITEMS REQUIRED (THREE SHOWN):
 - PRIMARY MATERIAL CHANGE - THREE MATERIAL CHANGES (B+B SIDING, HORIZONTAL LAP SIDING, STUCCO)
 - COVERED ENTRY PORCHES
 - 4 GABLE ROOF ELEMENTS
 - ROOF TREATMENT: ALL ROOFS ARE 4:12 PITCH WITH 12" SOFFITS
 - WINDOWS: 4" WINDOW/DOOR TRIM
 - AWNINGS, CANOPIES, TRELLISES ETC: NOT APPLICABLE



LEFT ELEVATION
ENHANCED

RIGHT ELEVATION
ENHANCED



LEFT ELEVATION

RIGHT ELEVATION

- ARCHITECTURAL DESIGN STANDARDS, RESIDENTIAL (16.16.02)
- ARCHITECTURAL WRAP
 - ALL STUCCO WAINSCOTS AND FRONT MATERIALS WRAP TO ADJACENT INTERIOR FACADE PLANES
 - ALL MATERIALS EXTEND THE FULL DEPTH OF THE ELEVATION ON ENHANCED SIDES INTENDING TO FACE COMMON OPEN SPACE
 - MATERIALS AND COLORS
 - FRONT ELEVATIONS & ENHANCED SIDE ELEVATIONS SHOW 3 COLORS PLUS A TRIM COLOR (BODY, ACCENT, AND STUCCO ACCENT). NON-ENHANCED SIDE ELEVATIONS SHOW 2 COLORS (BODY AND ACCENT)
 - MATERIALS HAVE BEEN USED SO THAT NO MATERIAL DOMINATES MORE THAN 75% OF FACADES
 - COLOR VARIATION: ALL BUILDING TYPES WILL INCORPORATE MORE THAN 4 COLOR VARIATIONS
- LIGHTING DESIGN STANDARDS, RESIDENTIAL (19.11)
- ALL LIGHTING FIXTURES ARE LED FIXTURES, RECESSED IN SOFFITS AND FACING STRAIGHT DOWNWARD. COLOR TEMPERATURE WILL BE 2700K - 3900K.

Color depictions vary among computers and printers. Refer to actual material samples for accurate material depictions.

ASCENT DUETS - WANDER - MODERN FARMHOUSE ELEVATION

BUILDING TYPE 2

OAKWOOD HOMES

Exterior specifics, colors and options are subject to change without notice. Exterior renderings are artist conceptions. ©2018 Oakwood Homes

REVISED 12/20/2023



FRONT ELEVATION

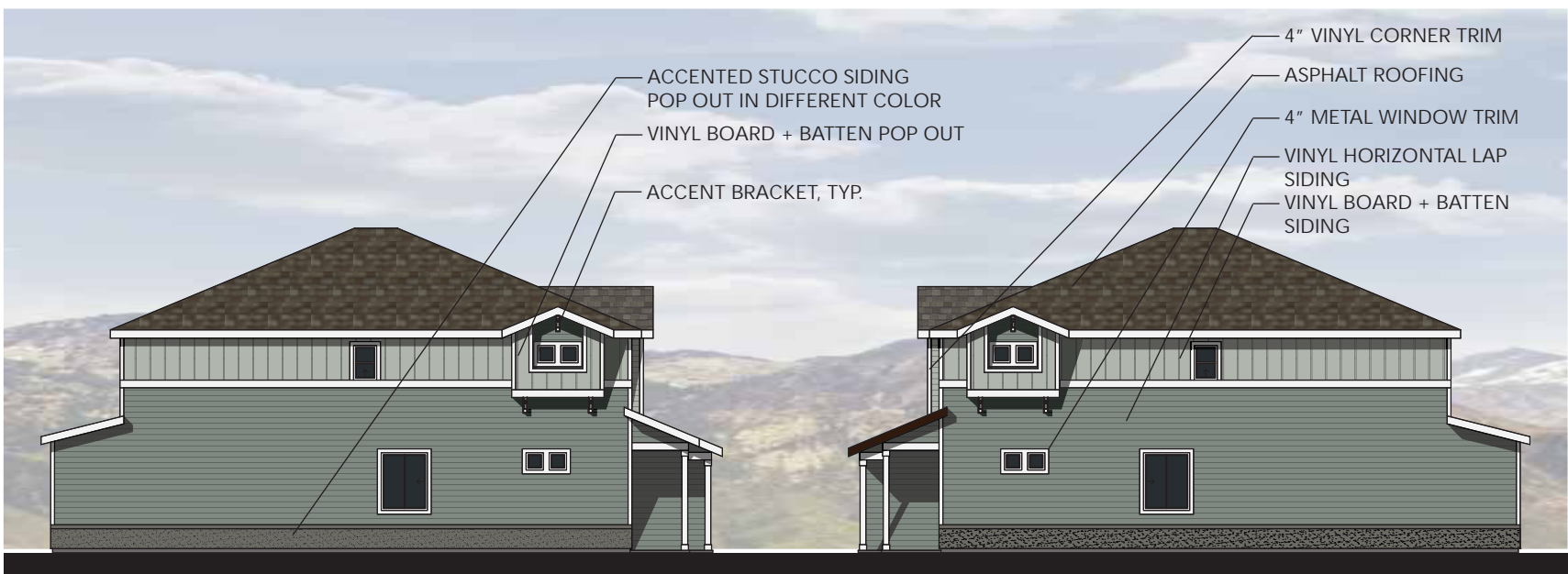
ACCENT PAINTED 2-PANEL ENTRY DOOR
ACCENT STUCCO



REAR ELEVATION

STUCCO ON ENHANCED ONLY

- ARCHITECTURAL DESIGN STANDARDS, GENERAL (16.16.01)
- BUILDING ARTICULATION (ELEVATION SHIFTS/STEPS PLUS 2 ADDITIONAL ITEMS)
 - FRONT POPOUT ELEVATION SHIFTS THAT CREATE SHADOW LINES AND VOLUMETRIC CHANGES
TWO ADDITIONAL ITEMS REQUIRED (THREE SHOWN):
 - PRIMARY MATERIAL CHANGE - THREE MATERIAL CHANGES (B+B, HORIZONTAL LAP SIDING, STUCCO)
 - COVERED ENTRY PORCHES
 - 2 GABLE ROOF ELEMENTS
 - ROOF TREATMENT: ALL ROOFS ARE 4:12 PITCH WITH 12" SOFFITS
 - WINDOWS: 4" WINDOW/DOOR TRIM
 - AWNINGS, CANOPIES, TRELLISES ETC: NOT APPLICABLE



LEFT ELEVATION
ENHANCED

RIGHT ELEVATION
ENHANCED



LEFT ELEVATION

RIGHT ELEVATION

- ARCHITECTURAL DESIGN STANDARDS, RESIDENTIAL (16.16.02)
- ARCHITECTURAL WRAP
 - ALL STUCCO WAINSCOTS AND FRONT MATERIALS WRAP TO ADJACENT INTERIOR FACADE PLANES
 - ALL STUCCO WAINSCOTS AND MATERIALS EXTEND THE FULL DEPTH OF THE ELEVATION ON ENHANCED SIDES INTENDING TO FACE COMMON OPEN SPACE
 - MATERIALS AND COLORS
 - FRONT ELEVATIONS & ENHANCED SIDE ELEVATIONS SHOW 3 COLORS PLUS A TRIM COLOR (BODY, ACCENT, AND STUCCO ACCENT).
NON-ENHANCED SIDE ELEVATIONS SHOW 2 COLORS (BODY AND ACCENT)
 - MATERIALS HAVE BEEN USED SO THAT NO MATERIAL DOMINATES MORE THAN 75% OF FACADES
 - COLOR VARIATION: ALL BUILDING TYPES WILL INCORPORATE MORE THAN 4 COLOR VARIATIONS
- LIGHTING DESIGN STANDARDS, RESIDENTIAL (19.11)
- ALL LIGHTING FIXTURES ARE LED FIXTURES, RECESSED IN SOFFITS AND FACING STRAIGHT DOWNWARD. COLOR TEMPERATURE WILL BE 2700K - 3900K.

Color depictions vary among computers and printers. Refer to actual material samples for accurate material depictions.

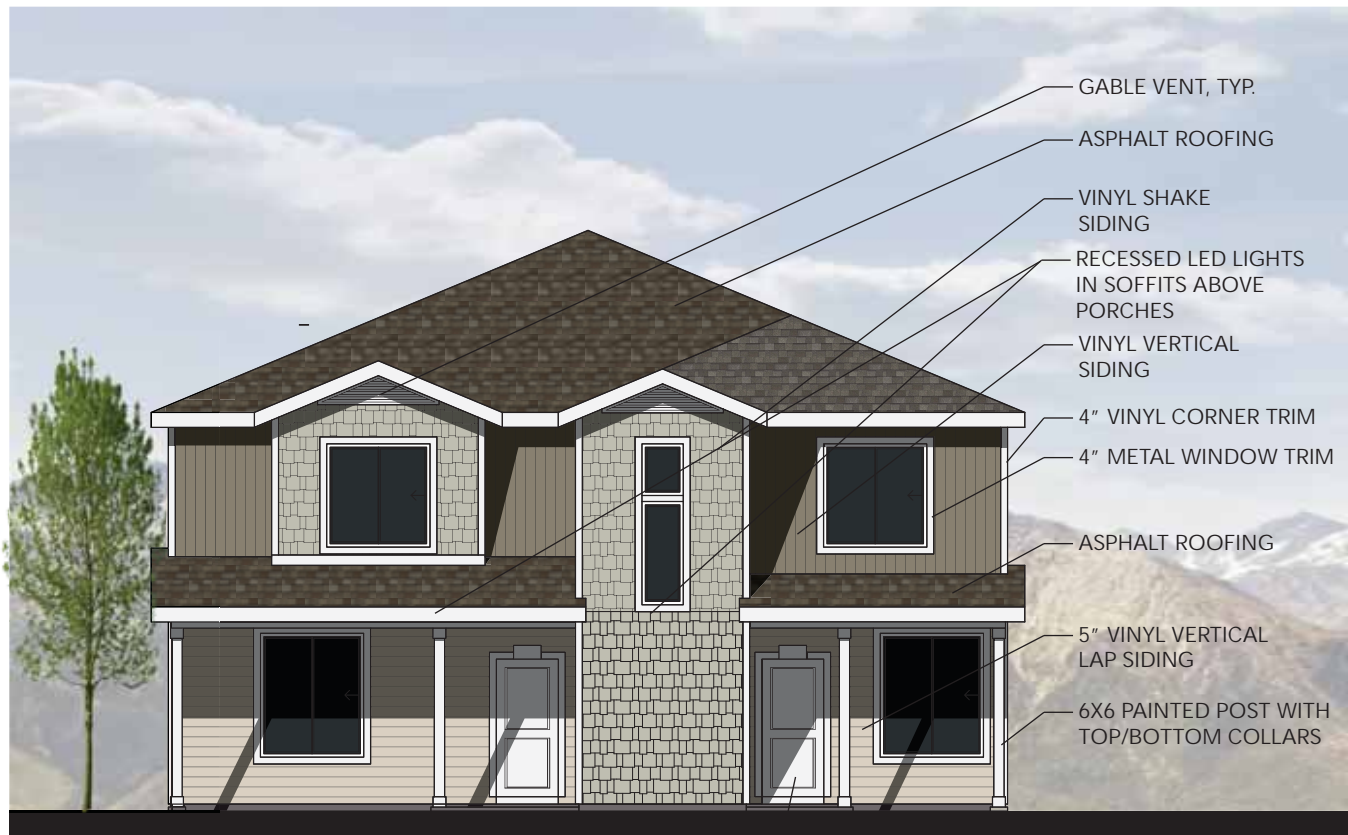
ASCENT DUETS - WANDER - CLASSIC HOMESTEAD ELEVATION

BUILDING TYPE 3

OAKWOOD HOMES

Exterior specifics, colors and options are subject to change without notice. Exterior renderings are artist conceptions. ©2018 Oakwood Homes

REVISED 12/20/2023



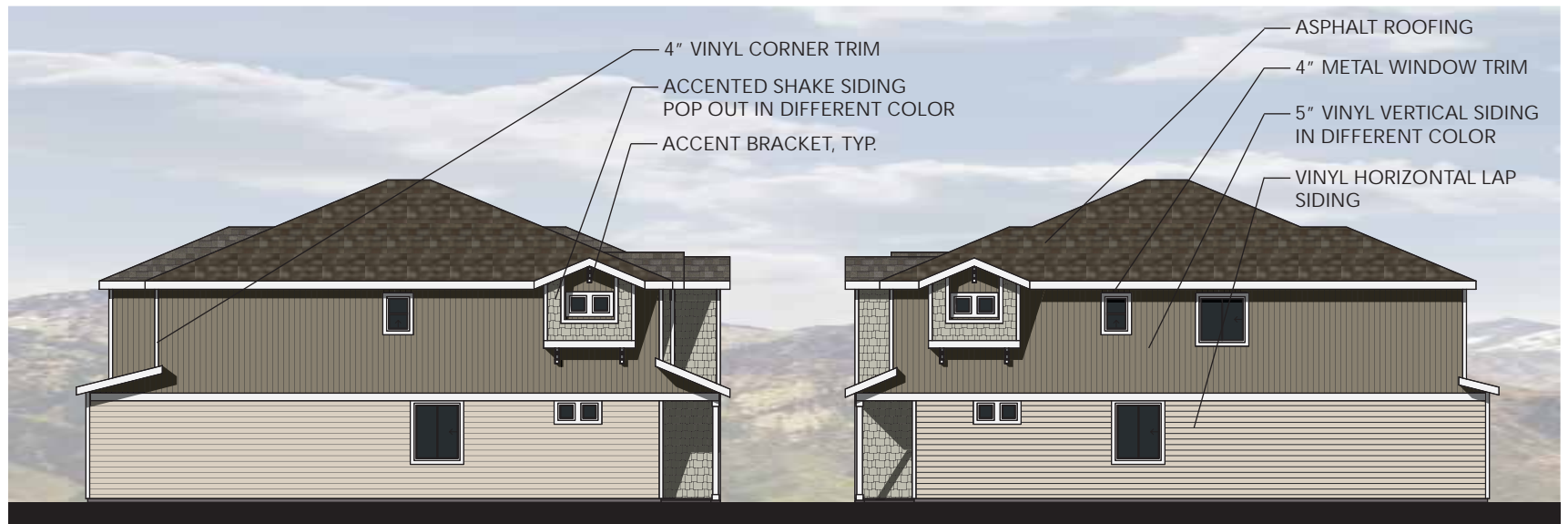
FRONT ELEVATION



REAR ELEVATION

ARCHITECTURAL DESIGN STANDARDS, GENERAL (16.16.01)

1. BUILDING ARTICULATION (ELEVATION SHIFTS/STEPS PLUS 2 ADDITIONAL ITEMS)
 - 2 FRONT POPOUT ELEVATION SHIFTS PLUS A TOWER ELEMENT THAT CREATE SHADOW LINES AND VOLUMETRIC CHANGES
 - TWO ADDITIONAL ITEMS REQUIRED (THREE SHOWN):
 - c. PRIMARY MATERIAL CHANGE - THREE MATERIAL CHANGES (VERTICAL SIDING, HORIZONTAL LAP SIDING, SHAKE)
 - d. COVERED ENTRY PORCHES
 - e. 2 GABLE ROOF ELEMENTS
2. ROOF TREATMENT: ALL ROOFS ARE 4:12 PITCH WITH 12" SOFFITS
3. WINDOWS: 4" WINDOW/DOOR TRIM
4. AWNINGS, CANOPIES, TRELLISES ETC: NOT APPLICABLE



**LEFT ELEVATION
ENHANCED**

**RIGHT ELEVATION
ENHANCED**



LEFT ELEVATION

RIGHT ELEVATION

ARCHITECTURAL DESIGN STANDARDS, RESIDENTIAL (16.16.02)

1. ARCHITECTURAL WRAP
 - a. ALL FRONT MATERIALS WRAP TO ADJACENT INTERIOR FACADE PLANES
 - b. ALL MATERIALS EXTEND THE FULL DEPTH OF THE ELEVATION ON ENHANCED SIDES INTENDING TO FACE COMMON OPEN SPACE
2. MATERIALS AND COLORS
 - a. FRONT ELEVATIONS & ENHANCED SIDE ELEVATIONS SHOW 3 COLORS PLUS A TRIM COLOR (BODY, ACCENT, AND SHAKE ACCENT). NON-ENHANCED SIDE ELEVATIONS SHOW 2 COLORS (BODY AND ACCENT)
 - b. MATERIALS HAVE BEEN USED SO THAT NO MATERIAL DOMINATES MORE THAN 75% OF FACADES
3. COLOR VARIATION: ALL BUILDING TYPES WILL INCORPORATE MORE THAN 4 COLOR VARIATIONS

LIGHTING DESIGN STANDARDS, RESIDENTIAL (19.11)

1. ALL LIGHTING FIXTURES ARE LED FIXTURES, RECESSED IN SOFFITS AND FACING STRAIGHT DOWNWARD. COLOR TEMPERATURE WILL BE 2700K - 3900K.

Color depictions vary among computers and printers. Refer to actual material samples for accurate material depictions.

ASCENT DUETS - WANDER - MODERN CRAFTSMAN ELEVATION

BUILDING TYPE 4

OAKWOOD HOMES

Exterior specifics, colors and options are subject to change without notice. Exterior renderings are artist conceptions. ©2018 Oakwood Homes

REVISED 12/20/2023

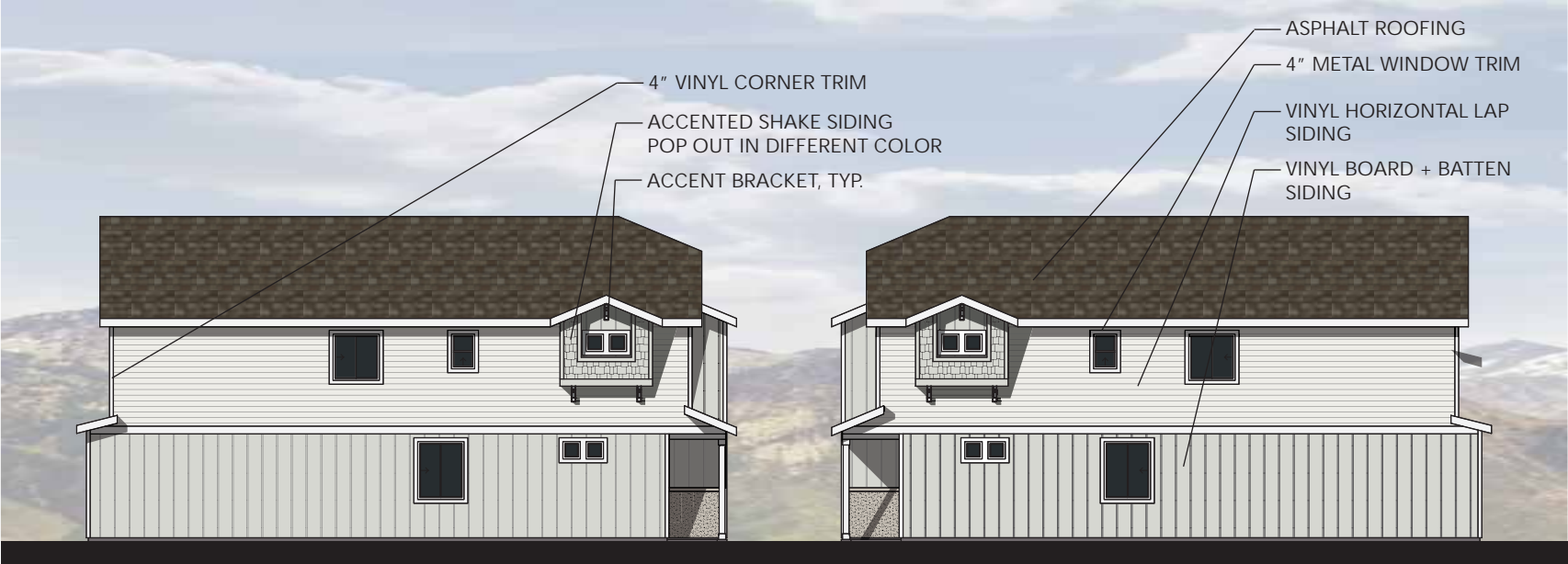


FRONT ELEVATION



REAR ELEVATION

- ARCHITECTURAL DESIGN STANDARDS, GENERAL (16.16.01)
- BUILDING ARTICULATION (ELEVATION SHIFTS/STEPS PLUS 2 ADDITIONAL ITEMS)
FRONT POPOUT ELEVATION SHIFTS THAT CREATE SHADOW LINES AND VOLUMETRIC CHANGES
TWO ADDITIONAL ITEMS REQUIRED (THREE SHOWN):
 - PRIMARY MATERIAL CHANGE - THREE MATERIAL CHANGES (B+B, HORIZONTAL LAP SIDING, STUCCO)
 - COVERED ENTRY PORCHES
 - 3 SHED ROOF ELEMENTS
 - ROOF TREATMENT: ALL ROOFS ARE 4:12 PITCH WITH 12" SOFFITS
 - WINDOWS: 4" WINDOW/DOOR TRIM
 - AWNINGS, CANOPIES, TRELLISES ETC: AWNINGS ABOVE FRONT WINDOWS AR 24" DEEP



LEFT ELEVATION
ENHANCED

RIGHT ELEVATION
ENHANCED



LEFT ELEVATION

RIGHT ELEVATION

- ARCHITECTURAL DESIGN STANDARDS, RESIDENTIAL (16.16.02)
- ARCHITECTURAL WRAP
 - ALL STUCCO WAINSCOTS AND FRONT MATERIALS WRAP TO ADJACENT INTERIOR FACADE PLANES
 - ALL MATERIALS EXTEND THE FULL DEPTH OF THE ELEVATION ON ENHANCED SIDES INTENDING TO FACE COMMON OPEN SPACE
 - MATERIALS AND COLORS
 - FRONT ELEVATIONS & ENHANCED SIDE ELEVATIONS SHOW 3 COLORS COLOR (BODY, ACCENT, AND STUCCO/SHAKE ACCENT).
NON-ENHANCED SIDE ELEVATIONS SHOW 2 COLORS (BODY AND ACCENT/FASCIA)
 - MATERIALS HAVE BEEN USED SO THAT NO MATERIAL DOMINATES MORE THAN 75% OF FACADES
 - COLOR VARIATION: ALL BUILDING TYPES WILL INCORPORATE MORE THAN 4 COLOR VARIATIONS
- LIGHTING DESIGN STANDARDS, RESIDENTIAL (19.11)
- ALL LIGHTING FIXTURES ARE LED FIXTURES, RECESSED IN SOFFITS AND FACING STRAIGHT DOWNWARD. COLOR TEMPERATURE WILL BE 2700K - 3900K.

Color depictions vary among computers and printers. Refer to actual material samples for accurate material depictions.

ASCENT DUETS - WANDER - CLASSIC FARMHOUSE ELEVATION
BUILDING TYPE 5

OAKWOOD HOMES

Exterior specifics, colors and options are subject to change without notice. Exterior renderings are artist conceptions. ©2018 Oakwood Homes

REVISED 12/20/2023

SCHEME #1

BODY 1 (VERTICAL SOFFIT D5)
SILVER MIST

BODY 2 (HORIZONTAL LAP D4)
DOVER WHITE

**TRIM ITEMS: WINDOW & CORNER/
COLUMNS / RAILING /
VENTS / SOFFITS**
VINYL: DOVER WHITE / WHITE
PAINTED AREAS: SW7005 PURE WHITE

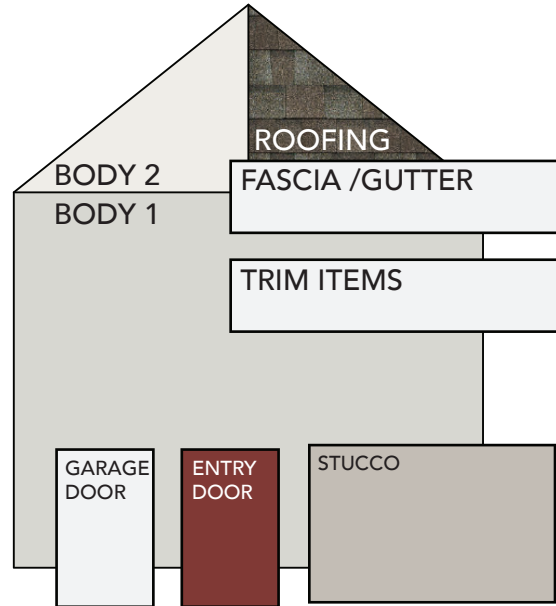
GUTTER AND FASCIA
WHITE

GARAGE DOOR
WHITE

DOOR COLOR
PAINT SW6328 FIREWEED

STUCCO
PAINT SW7641 COLONNADE GRAY

ROOFING
GAF TIMBERLINE NS "WEATHERED WOOD"



SCHEME #2

BODY 1 (VERTICAL SOFFIT D5)
STONE MOUNTAIN CLAY

BODY 2 (HORIZONTAL LAP D4)
RICH MOCHA

**TRIM ITEMS: WINDOW & CORNER/
COLUMNS / RAILING /
VENTS / SOFFITS**
VINYL: DOVER WHITE / WHITE
PAINTED AREAS: SW7005 PURE WHITE

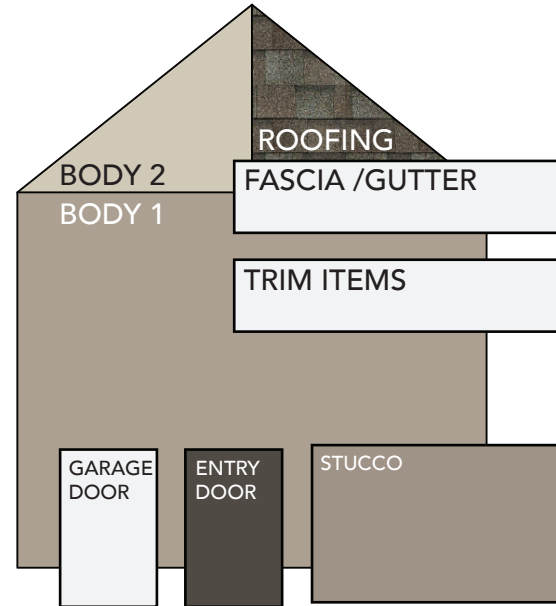
GUTTER AND FASCIA
WHITE

GARAGE DOOR
WHITE

DOOR COLOR
PAINT SW7020 BLACK FOX

STUCCO
PAINT SW7504 KEYSTONE GRAY

ROOFING
GAF TIMBERLINE NS "WEATHERED WOOD"



SCHEME #3

BODY 1 (VERTICAL SOFFIT D5)
NATURAL ALMOND

BODY 2 (HORIZONTAL LAP D4)
WEDGEWOOD

**TRIM ITEMS: WINDOW & CORNER/
COLUMNS / RAILING /
VENTS / SOFFITS**
VINYL: DOVER WHITE / WHITE
PAINTED AREAS: SW7005 PURE WHITE

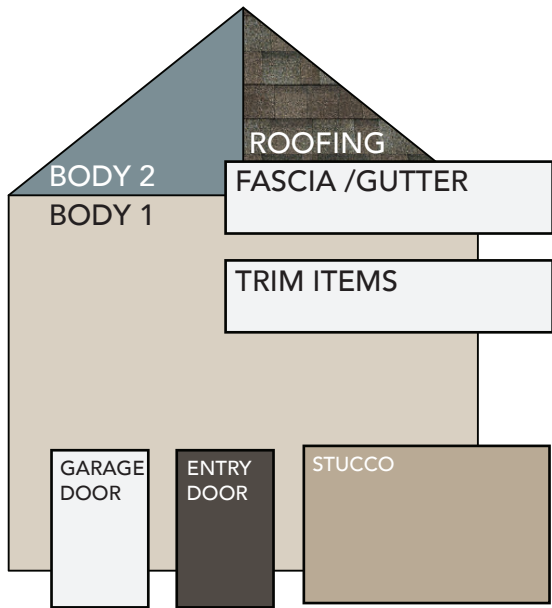
GUTTER AND FASCIA
WHITE

GARAGE DOOR
WHITE

DOOR COLOR
PAINT SW7020 BLACK FOX

STUCCO
PAINT SW6150 UNIVERSAL KHAKI

ROOFING
GAF TIMBERLINE NS "WEATHERED WOOD"



SCHEME #4

BODY 1 (VERTICAL SOFFIT D5)
ISLAND PEARL

BODY 2 (HORIZONTAL LAP D4)
FLINT

**TRIM ITEMS: WINDOW & CORNER/
COLUMNS / RAILING /
VENTS / SOFFITS**
VINYL: DOVER WHITE / WHITE
PAINTED AREAS: SW7005 PURE WHITE

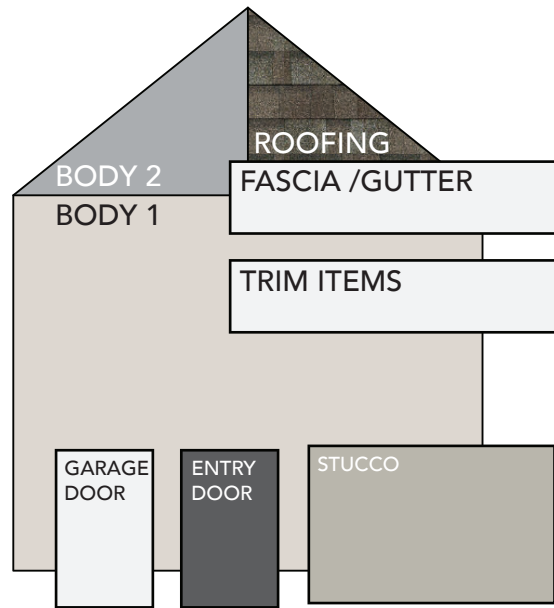
GUTTER AND FASCIA
WHITE

GARAGE DOOR
WHITE

DOOR COLOR
PAINT SW7674 PEPPERCORN

STUCCO
PAINT SW7016 MINDFUL GRAY

ROOFING
GAF TIMBERLINE NS "WEATHERED WOOD"



SCHEME #5

BODY 1 (VERTICAL SOFFIT D5)
SANDY TAN

BODY 2 (HORIZONTAL LAP D4)
SAGEBROOK

**TRIM ITEMS: WINDOW & CORNER/
COLUMNS / RAILING /
VENTS / SOFFITS**
VINYL: DOVER WHITE / WHITE
PAINTED AREAS: SW7005 PURE WHITE

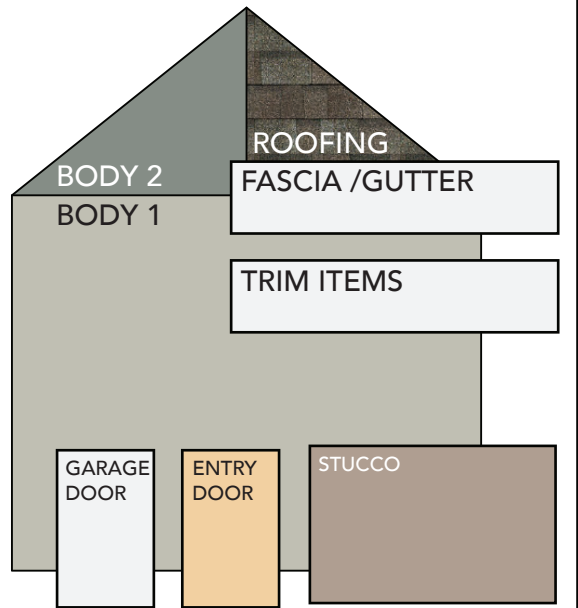
GUTTER AND FASCIA
WHITE

GARAGE DOOR
WHITE

DOOR COLOR
PAINT 2857 PEACE YELLOW

STUCCO
PAINT SW7633 TAUPE TONE

ROOFING
GAF TIMBERLINE NS "WEATHERED WOOD"



****NOTE: ALL WINDOW FRAMES ARE TO BE WHITE****

Color depictions vary among computers and printers. Refer to actual material samples for accurate material depictions.

ASCENT DUETS - WANDER
BUILDING TYPE 1

OAKWOOD  HOMES

Exterior specifics, colors and options are subject to change without notice. Exterior renderings are artist conceptions. ©2018 Oakwood Homes 

REVISED 4/26/2024

SCHEME #1

BODY 1 (HORITONAL LAP D4)
SILVER MIST

BODY 2 (BOARD AND BATTEN)
DOVER WHITE

**TRIM ITEMS: WINDOW & CORNER/
COLUMNS / RAILING /
VENTS / SOFFITS**
VINYL: DOVER WHITE / WHITE
PAINTED AREAS: SW7005 PURE WHITE

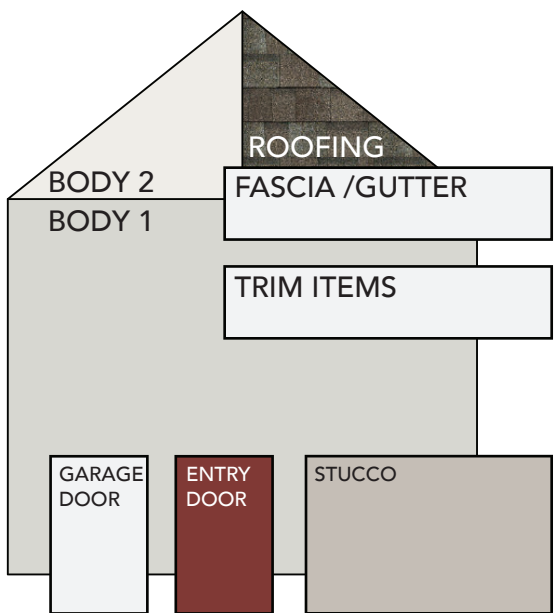
GUTTER AND FASCIA
WHITE

GARAGE DOOR
WHITE

DOOR COLOR
PAINT SW6328 FIREWEED

STUCCO
PAINT SW7641 COLONNADE GRAY

ROOFING
GAF TIMBERLINE NS "WEATHERED WOOD"



SCHEME #2

BODY 1 (HORITONAL LAP D4)
BRIARWOOD

BODY 2 (BOARD AND BATTEN)
SANDY TAN

**TRIM ITEMS: WINDOW & CORNER/
COLUMNS / RAILING /
VENTS / SOFFITS**
VINYL: DOVER WHITE / WHITE
PAINTED AREAS: SW7005 PURE WHITE

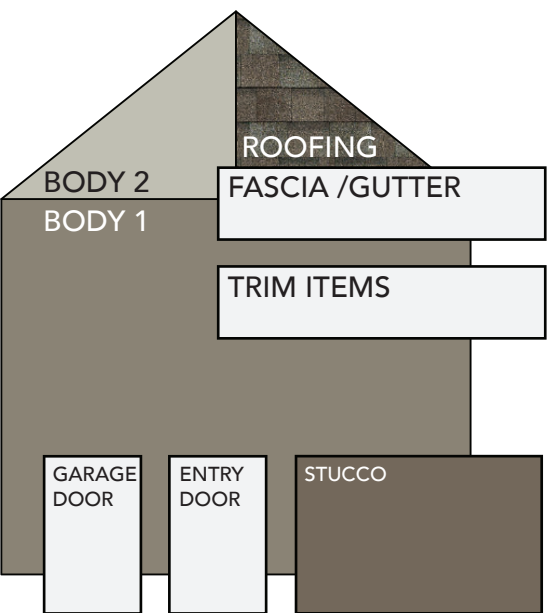
GUTTER AND FASCIA
WHITE

GARAGE DOOR
WHITE

DOOR COLOR
PAINT SW7005 PURE WHITE

STUCCO
PAINT SW7033 BRAINSTORM BRONZE

ROOFING
GAF TIMBERLINE NS "WEATHERED WOOD"



SCHEME #3

BODY 1 (HORITONAL LAP D4)
WEDGEWOOD

BODY 2 (BOARD AND BATTEN)
FLINT

**TRIM ITEMS: WINDOW & CORNER/
COLUMNS / RAILING /
VENTS / SOFFITS**
VINYL: DOVER WHITE / WHITE
PAINTED AREAS: SW7005 PURE WHITE

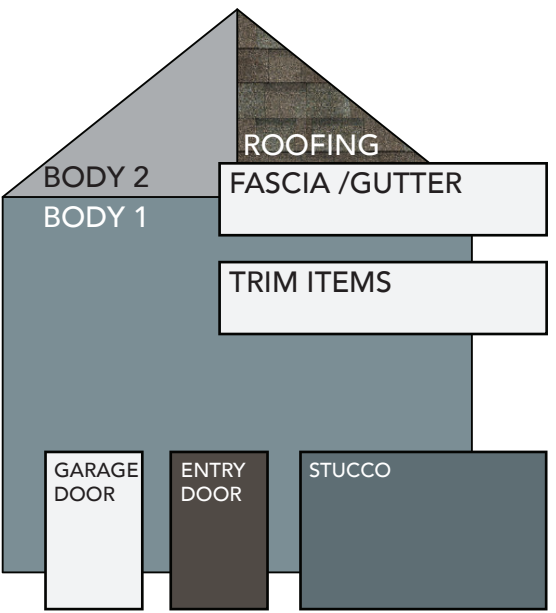
GUTTER AND FASCIA
WHITE

GARAGE DOOR
WHITE

DOOR COLOR
PAINT SW7020 BLACK FOX

STUCCO
PAINT SW7624 SLATE TILE

ROOFING
GAF TIMBERLINE NS "WEATHERED WOOD"



SCHEME #4

BODY 1 (HORITONAL LAP D4)
SAGEBROOK

BODY 2 (BOARD AND BATTEN)
SPANISH OLIVE

**TRIM ITEMS: WINDOW & CORNER/
COLUMNS / RAILING /
VENTS / SOFFITS**
VINYL: DOVER WHITE / WHITE
PAINTED AREAS: SW7005 PURE WHITE

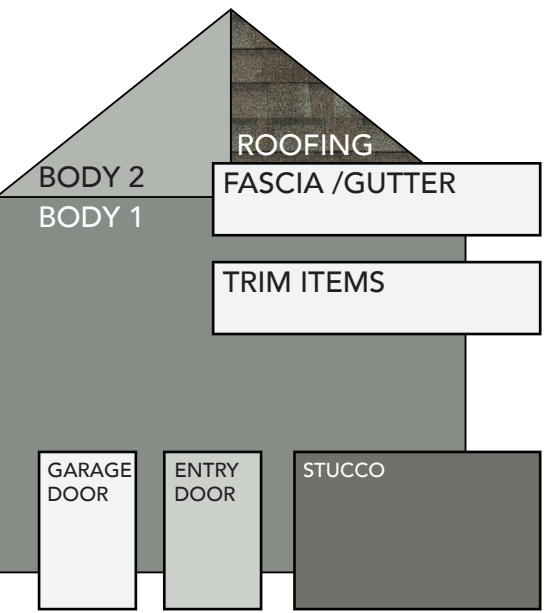
GUTTER AND FASCIA
WHITE

GARAGE DOOR
WHITE

DOOR COLOR
PAINT SW6204 SEA SALT

STUCCO
PAINT SW6201 THUNDEROUS

ROOFING
GAF TIMBERLINE NS "WEATHERED WOOD"



SCHEME #5

BODY 1 (HORITONAL LAP D4)
PEWTER

BODY 2 (BOARD AND BATTEN)
GEORGIAN GRAY

**TRIM ITEMS: WINDOW & CORNER/
COLUMNS / RAILING /
VENTS / SOFFITS**
VINYL: DOVER WHITE / WHITE
PAINTED AREAS: SW7005 PURE WHITE

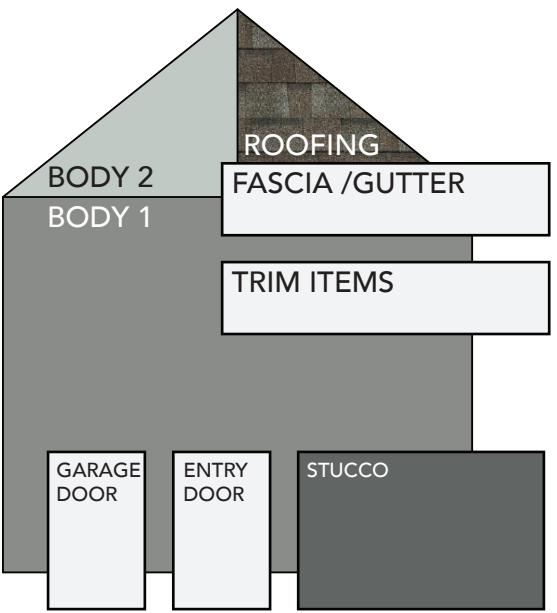
GUTTER AND FASCIA
WHITE

GARAGE DOOR
WHITE

DOOR COLOR
PAINT SW7005 PURE WHITE

STUCCO
PAINT SW2848 ROYCROFT PEWTER

ROOFING
GAF TIMBERLINE NS "WEATHERED WOOD"



****NOTE: ALL WINDOW FRAMES ARE TO BE WHITE****

Color depictions vary among computers and printers. Refer to actual material samples for accurate material depictions.

SCHEME #1

BODY 1 (HORITONAL LAP D4)
SILVER MIST

BODY 2 (BOARD AND BATTEN)
DOVER WHITE

**TRIM ITEMS: WINDOW & CORNER/
COLUMNS / RAILING /
VENTS / SOFFITS**
VINYL: DOVER WHITE / WHITE
PAINTED AREAS: SW7005 PURE WHITE

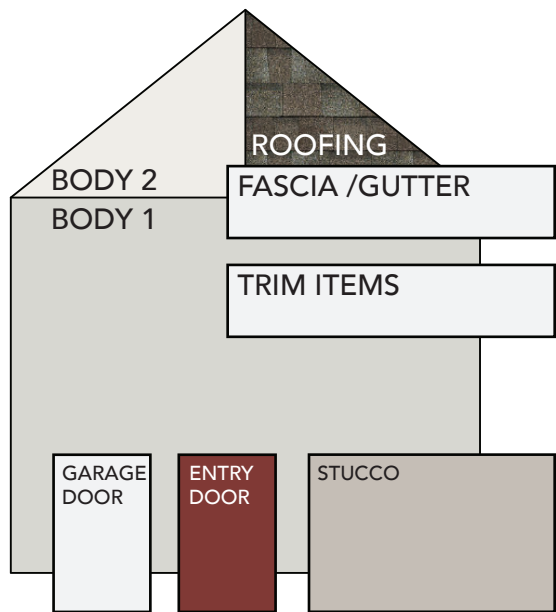
GUTTER AND FASCIA
WHITE

GARAGE DOOR
WHITE

DOOR COLOR
PAINT SW6328 FIREWEED

STUCCO
PAINT SW7641 COLONNADE GRAY

ROOFING
GAF TIMBERLINE NS "WEATHERED WOOD"



SCHEME #2

BODY 1 (HORITONAL LAP D4)
BRIARWOOD

BODY 2 (BOARD AND BATTEN)
SANDY TAN

**TRIM ITEMS: WINDOW & CORNER/
COLUMNS / RAILING /
VENTS / SOFFITS**
VINYL: DOVER WHITE / WHITE
PAINTED AREAS: SW7005 PURE WHITE

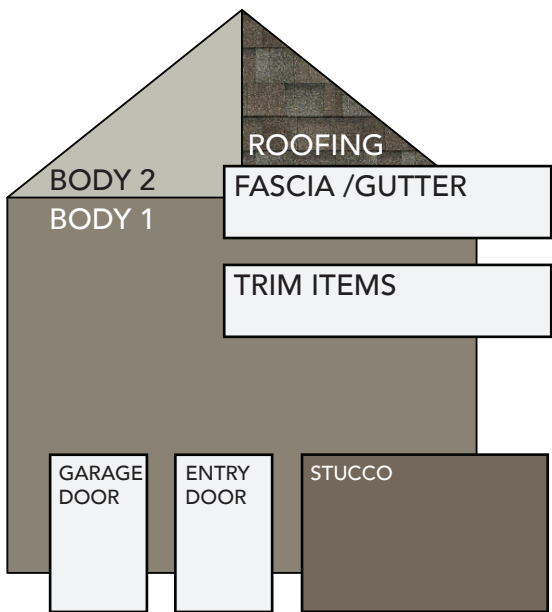
GUTTER AND FASCIA
WHITE

GARAGE DOOR
WHITE

DOOR COLOR
PAINT SW7005 PURE WHITE

STUCCO
PAINT SW7033 BRAINSTORM BRONZE

ROOFING
GAF TIMBERLINE NS "WEATHERED WOOD"



SCHEME #3

BODY 1 (HORITONAL LAP D4)
WEDGEWOOD

BODY 2 (BOARD AND BATTEN)
FLINT

**TRIM ITEMS: WINDOW & CORNER/
COLUMNS / RAILING /
VENTS / SOFFITS**
VINYL: DOVER WHITE / WHITE
PAINTED AREAS: SW7005 PURE WHITE

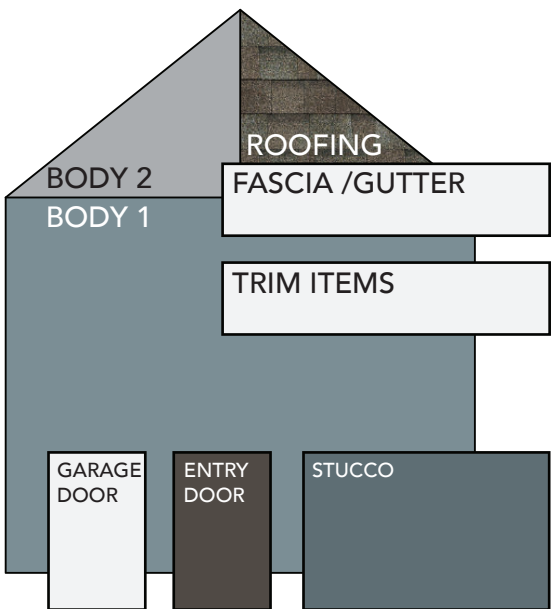
GUTTER AND FASCIA
WHITE

GARAGE DOOR
WHITE

DOOR COLOR
PAINT SW7020 BLACK FOX

STUCCO
PAINT SW7624 SLATE TILE

ROOFING
GAF TIMBERLINE NS "WEATHERED WOOD"



SCHEME #4

BODY 1 (HORITONAL LAP D4)
SAGEBROOK

BODY 2 (BOARD AND BATTEN)
SPANISH OLIVE

**TRIM ITEMS: WINDOW & CORNER/
COLUMNS / RAILING /
VENTS / SOFFITS**
VINYL: DOVER WHITE / WHITE
PAINTED AREAS: SW7005 PURE WHITE

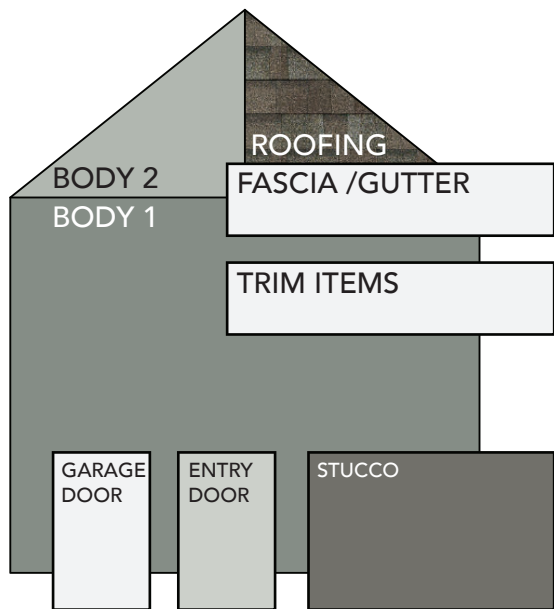
GUTTER AND FASCIA
WHITE

GARAGE DOOR
WHITE

DOOR COLOR
PAINT SW6204 SEA SALT

STUCCO
PAINT SW6201 THUNDEROUS

ROOFING
GAF TIMBERLINE NS "WEATHERED WOOD"



SCHEME #5

BODY 1 (HORITONAL LAP D4)
PEWTER

BODY 2 (BOARD AND BATTEN)
GEORGIAN GRAY

**TRIM ITEMS: WINDOW & CORNER/
COLUMNS / RAILING /
VENTS / SOFFITS**
VINYL: DOVER WHITE / WHITE
PAINTED AREAS: SW7005 PURE WHITE

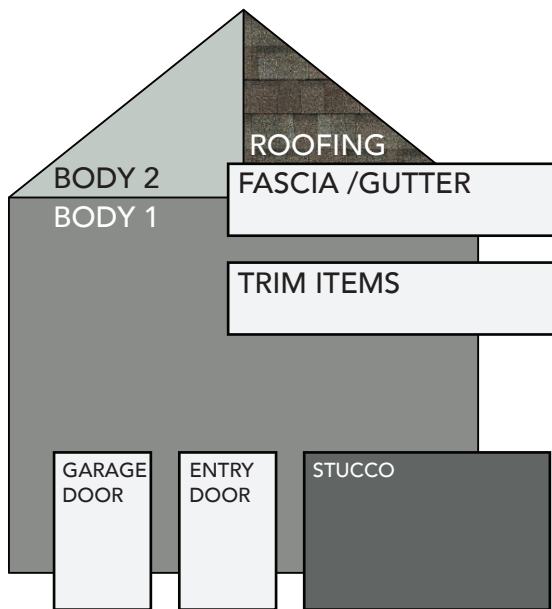
GUTTER AND FASCIA
WHITE

GARAGE DOOR
WHITE

DOOR COLOR
PAINT SW7005 PURE WHITE

STUCCO
PAINT SW2848 ROYCROFT PEWTER

ROOFING
GAF TIMBERLINE NS "WEATHERED WOOD"



****NOTE: ALL WINDOW FRAMES ARE TO BE WHITE****

Color depictions vary among computers and printers. Refer to actual material samples for accurate material depictions.

ASCENT DUETS - WANDER
BUILDING TYPE 3

OAKWOOD  HOMES

Exterior specifics, colors and options are subject to change without notice. Exterior renderings are artist conceptions. ©2018 Oakwood Homes

REVISED 4/26/2024

SCHEME #1

BODY 1 (HORIZONTAL LAP D4)
SILVER MIST

BODY 2 (VERTICAL SOFFIT D5)
DOVER WHITE

BODY 3 (SHAKE)
DOVER WHITE

**TRIM ITEMS: WINDOW & CORNER/
COLUMNS / RAILING /
VENTS / SOFFITS**
VINYL: DOVER WHITE / WHITE
PAINTED AREAS: SW7005 PURE WHITE

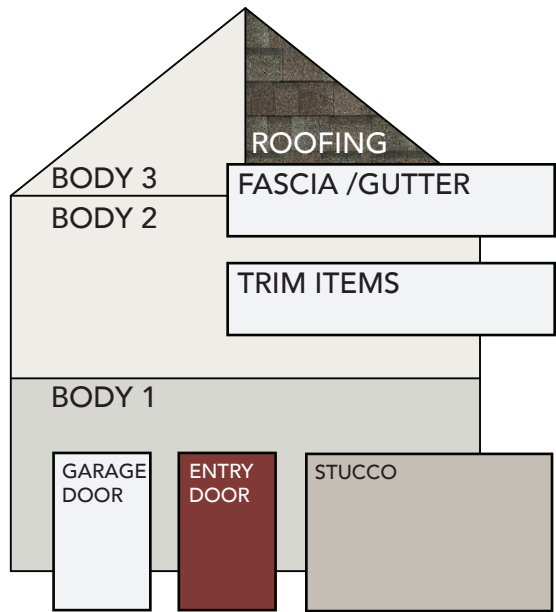
GUTTER AND FASCIA
WHITE

GARAGE DOOR
WHITE

DOOR COLOR
PAINT SW6328 FIREWEED

STUCCO
PAINT SW7641 COLONNADE GRAY

ROOFING
GAF TIMBERLINE NS "WEATHERED WOOD"



SCHEME #2

BODY 1 (HORIZONTAL LAP D4)
BRIARWOOD

BODY 2 (VERTICAL SOFFIT D5)
NATURAL ALMOND

BODY 3 (SHAKE)
SANDY TAN

**TRIM ITEMS: WINDOW & CORNER/
COLUMNS / RAILING /
VENTS / SOFFITS**
VINYL: DOVER WHITE / WHITE
PAINTED AREAS: SW7005 PURE WHITE

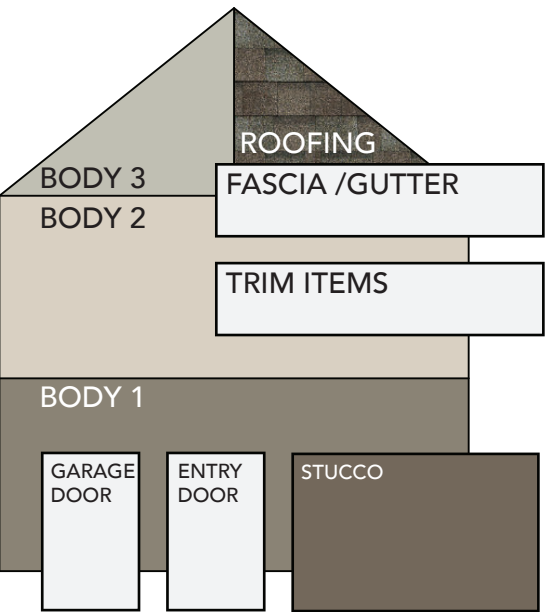
GUTTER AND FASCIA
WHITE

GARAGE DOOR
WHITE

DOOR COLOR
PAINT SW7005 PURE WHITE

STUCCO
PAINT SW7033 BRAINSTORM BRONZE

ROOFING
GAF TIMBERLINE NS "WEATHERED WOOD"



SCHEME #3

BODY 1 (HORIZONTAL LAP D4)
WEDGEWOOD

BODY 2 (VERTICAL SOFFIT D5)
ISLAND PEARL

BODY 3 (SHAKE)
FLINT

**TRIM ITEMS: WINDOW & CORNER/
COLUMNS / RAILING /
VENTS / SOFFITS**
VINYL: DOVER WHITE / WHITE
PAINTED AREAS: SW7005 PURE WHITE

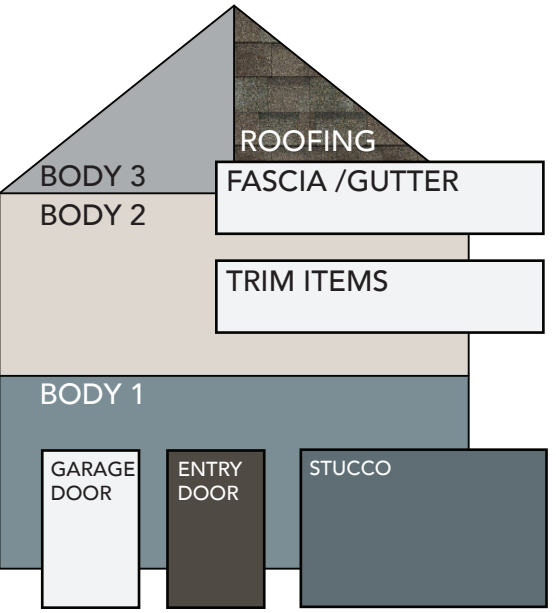
GUTTER AND FASCIA
WHITE

GARAGE DOOR
WHITE

DOOR COLOR
PAINT SW7020 BLACK FOX

STUCCO
PAINT SW7624 SLATE TILE

ROOFING
GAF TIMBERLINE NS "WEATHERED WOOD"



SCHEME #4

BODY 1 (HORIZONTAL LAP D4)
SAGEBROOK

BODY 2 (VERTICAL SOFFIT D5)
NATURAL ALMOND

BODY 3 (SHAKE)
SPANISH OLIVE

**TRIM ITEMS: WINDOW & CORNER/
COLUMNS / RAILING /
VENTS / SOFFITS**
VINYL: DOVER WHITE / WHITE
PAINTED AREAS: SW7005 PURE WHITE

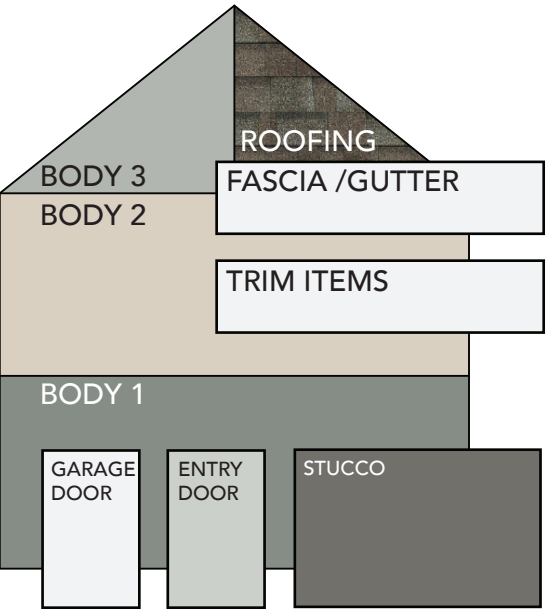
GUTTER AND FASCIA
WHITE

GARAGE DOOR
WHITE

DOOR COLOR
PAINT SW6204 SEA SALT

STUCCO
PAINT SW6201 THUNDEROUS

ROOFING
GAF TIMBERLINE NS "WEATHERED WOOD"



SCHEME #5

BODY 1 (HORIZONTAL LAP D4)
PEWTER

BODY 2 (VERTICAL SOFFIT D5)
SILVER MIST

BODY 3 (SHAKE)
GEORGIAN GREY

**TRIM ITEMS: WINDOW & CORNER/
COLUMNS / RAILING /
VENTS / SOFFITS**
VINYL: DOVER WHITE / WHITE
PAINTED AREAS: SW7005 PURE WHITE

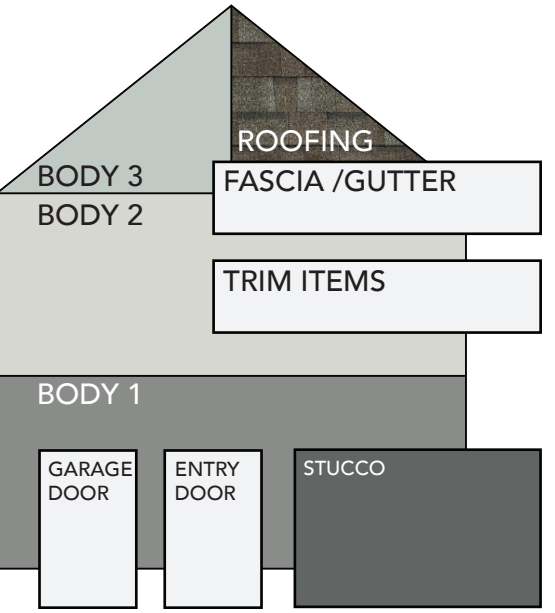
GUTTER AND FASCIA
WHITE

GARAGE DOOR
WHITE

DOOR COLOR
PAINT SW7005 PURE WHITE

STUCCO
PAINT SW2848 ROYCROFT PEWTER

ROOFING
GAF TIMBERLINE NS "WEATHERED WOOD"



NOTE: ALL WINDOW FRAMES ARE TO BE WHITE

Color depictions vary among computers and printers. Refer to actual material samples for accurate material depictions.

SCHEME #1

BODY 1 (BOARD AND BATTEN)
SILVER MIST

BODY 2 (HORIZONTAL LAP D4)
DOVER WHITE

**TRIM ITEMS: WINDOW & CORNER/
COLUMNS / RAILING /
VENTS / SOFFITS**
VINYL: DOVER WHITE / WHITE
PAINTED AREAS: SW7005 PURE WHITE

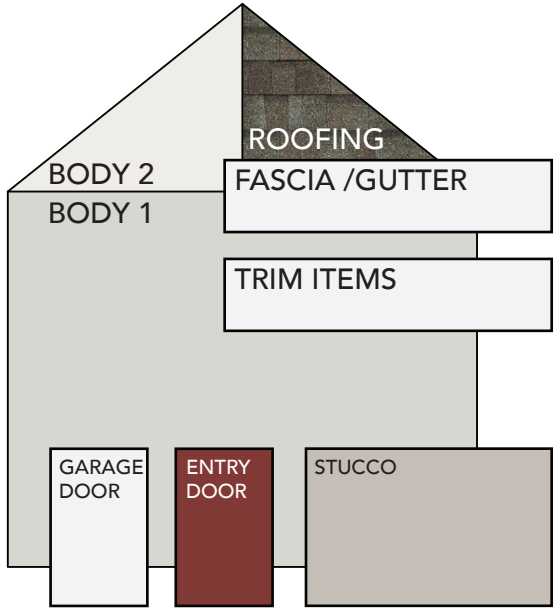
GUTTER AND FASCIA
WHITE

GARAGE DOOR
WHITE

DOOR COLOR
PAINT SW6328 FIREWEED

STUCCO
PAINT SW7641 COLONNADE GRAY

ROOFING
GAF TIMBERLINE NS "WEATHERED WOOD"



SCHEME #2

BODY 1 (HBOARD AND BATTEN)
BRIARWOOD

BODY 2 (HORIZONTAL LAP D4)
SANDY TAN

**TRIM ITEMS: WINDOW & CORNER/
COLUMNS / RAILING /
VENTS / SOFFITS**
VINYL: DOVER WHITE / WHITE
PAINTED AREAS: SW7005 PURE WHITE

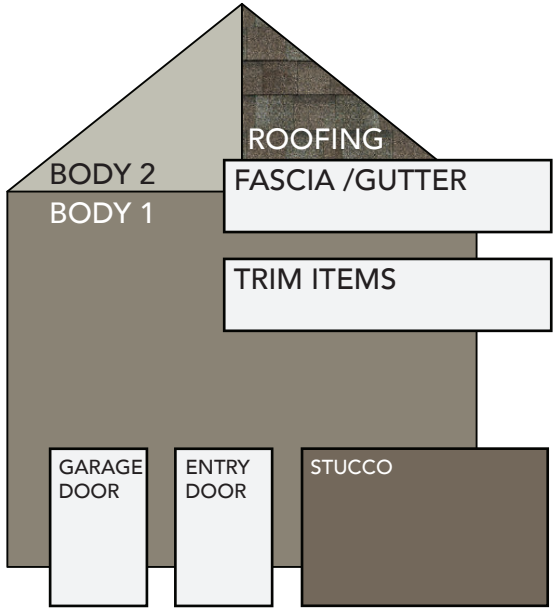
GUTTER AND FASCIA
WHITE

GARAGE DOOR
WHITE

DOOR COLOR
PAINT SW7005 PURE WHITE

STUCCO
PAINT SW7033 BRAINSTORM BRONZE

ROOFING
GAF TIMBERLINE NS "WEATHERED WOOD"



SCHEME #3

BODY 1 (BOARD AND BATTEN)
WEDGEWOOD

BODY 2 (HORIZONTAL LAP D4)
FLINT

**TRIM ITEMS: WINDOW & CORNER/
COLUMNS / RAILING /
VENTS / SOFFITS**
VINYL: DOVER WHITE / WHITE
PAINTED AREAS: SW7005 PURE WHITE

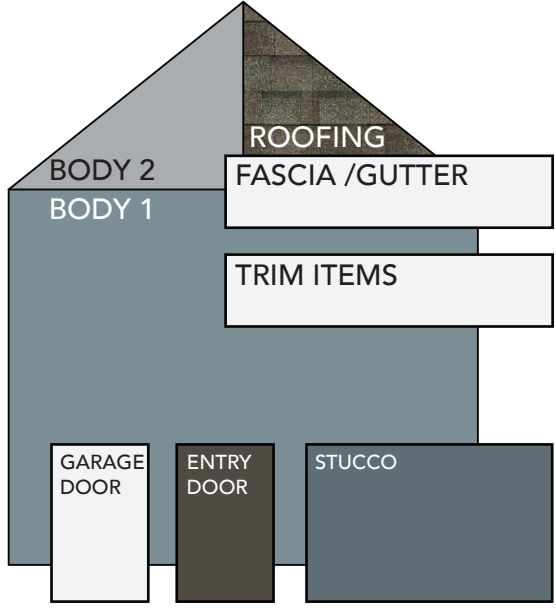
GUTTER AND FASCIA
WHITE

GARAGE DOOR
WHITE

DOOR COLOR
PAINT SW7020 BLACK FOX

STUCCO
PAINT SW7624 SLATE TILE

ROOFING
GAF TIMBERLINE NS "WEATHERED WOOD"



SCHEME #4

BODY 1 (BOARD AND BATTEN)
SAGEBROOK

BODY 2 (HORIZONTAL LAP D4)
SPANISH OLIVE

**TRIM ITEMS: WINDOW & CORNER/
COLUMNS / RAILING /
VENTS / SOFFITS**
VINYL: DOVER WHITE / WHITE
PAINTED AREAS: SW7005 PURE WHITE

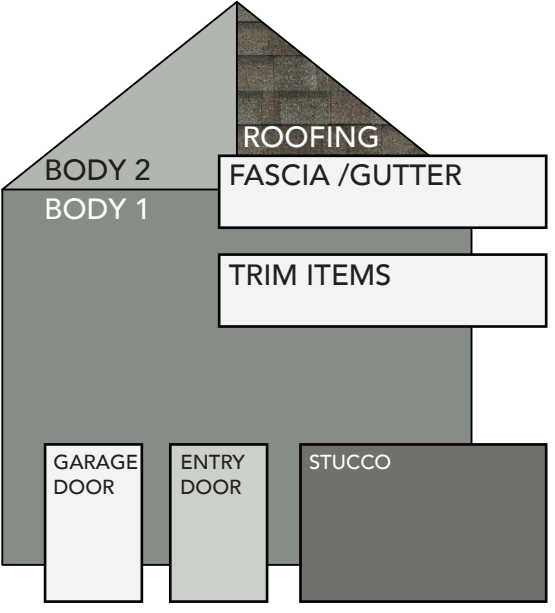
GUTTER AND FASCIA
WHITE

GARAGE DOOR
WHITE

DOOR COLOR
PAINT SW6204 SEA SALT

STUCCO
PAINT SW6201 THUNDEROUS

ROOFING
GAF TIMBERLINE NS "WEATHERED WOOD"



SCHEME #5

BODY 1 (BOARD AND BATTEN)
PEWTER

BODY 2 (HORIZONTAL LAP D4)
GEORGIAN GRAY

**TRIM ITEMS: WINDOW & CORNER/
COLUMNS / RAILING /
VENTS / SOFFITS**
VINYL: DOVER WHITE / WHITE
PAINTED AREAS: SW7005 PURE WHITE

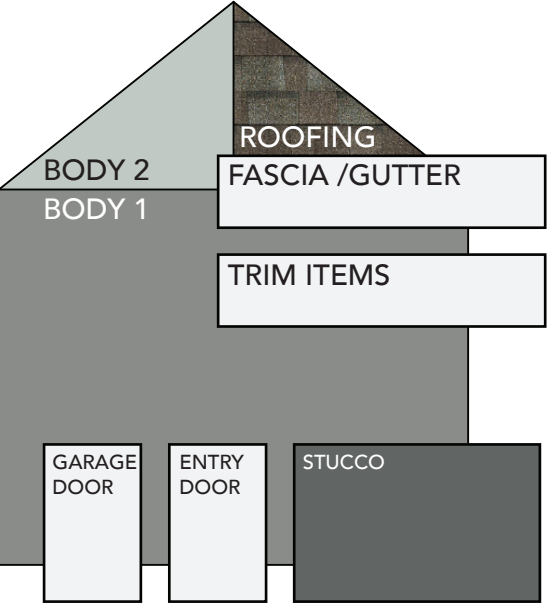
GUTTER AND FASCIA
WHITE

GARAGE DOOR
WHITE

DOOR COLOR
PAINT SW7005 PURE WHITE

STUCCO
PAINT SW2848 ROYCROFT PEWTER

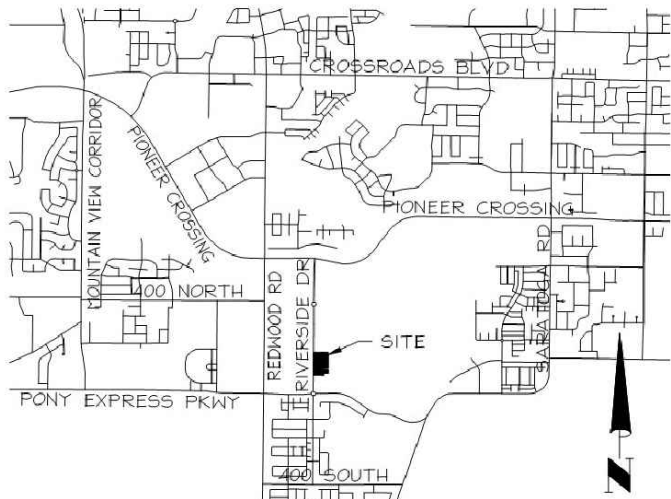
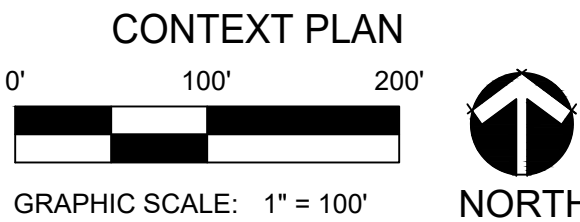
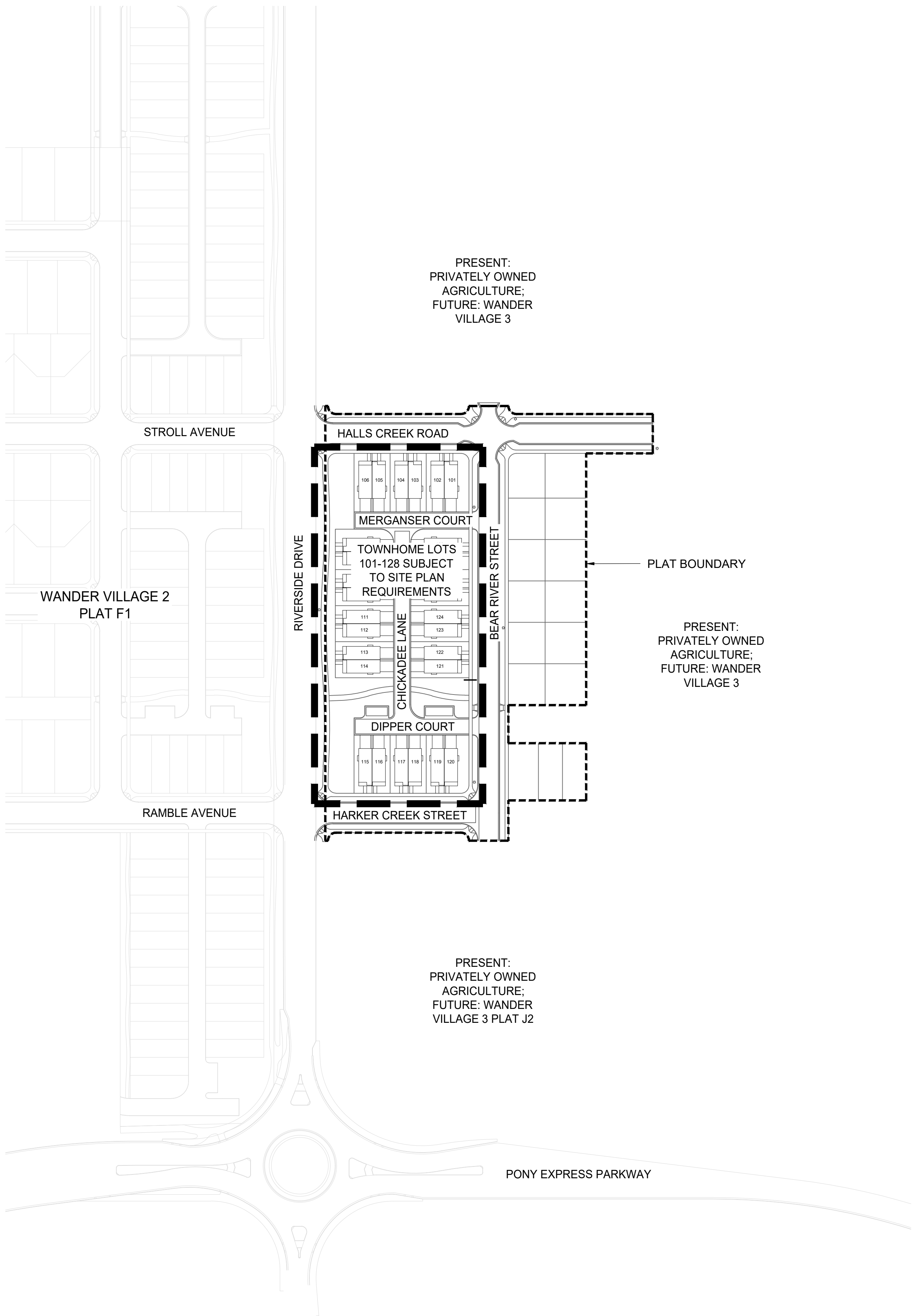
ROOFING
GAF TIMBERLINE NS "WEATHERED WOOD"



****NOTE: ALL WINDOW FRAMES ARE TO BE WHITE****

Color depictions vary among computers and printers. Refer to actual material samples for accurate material depictions.

WANDER PLAT J1 ARCHITECTURAL SITE PLAN SUBMITTAL



ARCHITECT / PLANNER



116 Inverness Drive East,
Suite 340
Englewood, Colorado 80112
T 303.734.1777

Planning & Entitlements
Landscape Architecture
Architecture | Visual Media
Real Estate Advisory
www.LAIdesigngroup.com

ENGINEER/SURVEYOR

PERIGEE CONSULTING, LLC
9089 S. 1300 W., SUITE 160
WEST JORDAN, UT 84088
OFFICE: (801) 910-3395
ATTN: JED ATHERLY

JORDAN PROMENADE - J1
ARCHITECTURAL SITE PLAN
SARATOGA SPRINGS, UT
COVER SHEET

PROFESSIONAL STAMP

PROJECT INFORMATION

PROJECT #: 221079
DRAWN BY: ML/JJO
CHECKED BY: RH

ISSUE RECORD

1st Submittal	11/26/24
---------------	----------

SHEET NUMBER

L1.00

Copyright © 2024 LAI Design Group
These plans are copyrighted and are subject to copyright protection under Section 102 of the Copyright Act, 17 U.S.C., as amended December 1990, and known as the Architectural Works Copyright Protection Act of 1990. The protection includes but is not limited to the overall form as well as the arrangement and composition of spaces and elements of the design. Under such protection, unauthorized use of these plans, work or forms represented, can legally result in the cessation of such construction.

NOT FOR CONSTRUCTION