

VALET CLIPPERS SARATOGA SPRINGS

357 E CROSSROADS BLVD
Saratoga Springs, UT

City Sign Code:

- ii. Size, primary signage. The primary building signage shall not exceed a cumulative total size equal to **eight percent** of the façade on which the sign or signs are mounted, or 30 square feet, whichever is larger.
- iii. Secondary signage. Secondary signage shall not be mounted on the same façade as primary signage, and each secondary sign shall not exceed a **cumulative total size equal to four percent** of the façade on which the sign or signs are mounted.

7. Building Signs. The main portion of any building sign shall be either a complex cabinet sign or channel lettering. **A portion of the sign may be used for the logo and may be a simple cabinet sign only when a complex cabinet sign or channel lettering accompanies it.**

4. Internal Directional Signs in all commercial zones

- a. Type. Small pedestal, pole, and monument signs are the only freestanding directional signs permitted.
- b. Location. All signs shall be located adjacent to and within ten feet of an internal intersection, drive-thru, or similar feature needing directional clarification as identified on an approved site plan.
- c. Height. A small pedestal, pole, or monument sign shall not exceed a **height of three feet**.
- d. Size: a small pedestal, pole, or monument sign shall not exceed **three square feet** in size.
- i. The pole size for an internal directional sign must be at least **six inches in width**.
- e. Number. No more than two pedestal or monument signs per internal intersection, drivethru, or similar feature.

Tenant Name: Valet Clippers Saratoga, LLC

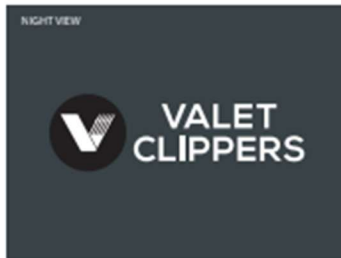
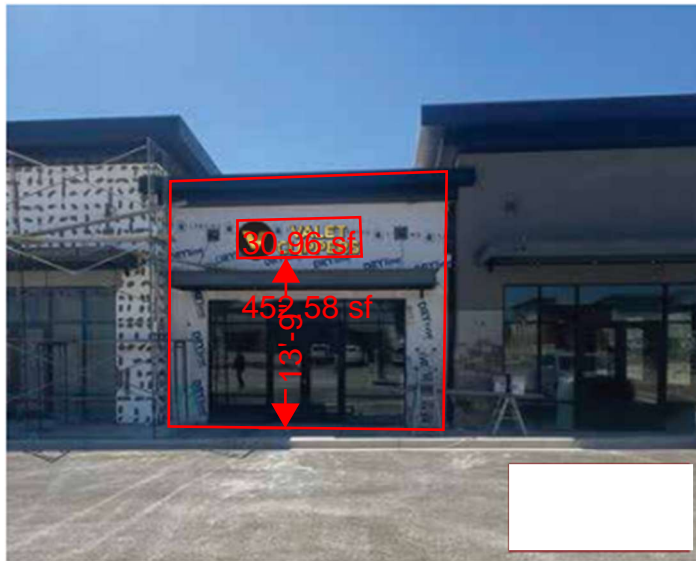
Tenant Signature:

Date: 9/23/2025

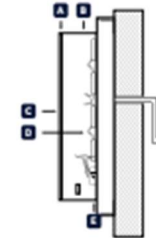
Landlord Name: Jake Ebert

Landlord Signature:

Date: 9/28/25



- A** FACES: 3/16" WHITE ACRYLIC WITH VINYL
- B** RETURNS: 3" BLACK
- C** TRIMCAP: BLACK
- D** ILLUMINATION: SOFT WHITE LED (4000K)
2 FOOT CANDLES
- E** MOUNTING: FLUSH TO 2" BACKER BOX



Hours of illumination will not exceed 30min after the business is no longer open. Mon-Fri 8.30pm, and Saturday 7.30pm. They will not exceed two-candles as measured one foot from the surface of the sign.

*Visible disconnect switch on sign
*120V service supplied by others

ALL COMPONENTS LISTED

VINYL SCHEDULE

- V1: 3M SATIN GOLD 131 - PERFORATED
- V2: MATTE BLACK

N2

PRIMARY ELEVATION FACE LIT CHANNEL LETTERS ON DIMENSIONAL BACKER

357 E Crossroads Blvd
Saratoga Springs, UT

Tenant Name: Valet Clippers Saratoga, LLC

Tenant Signature:

Date: 9/23/2025

Landlord Name: Jake Ebert

Landlord Signature:

Date: 9/28/25