



Exhibit 1

silicon **signs**

# THE WURST SARATOGA SPRINGS

297 E CROSSROADS BLVD  
Saratoga Springs, UT

City Sign Code:

ii. Size, primary signage. The primary building signage shall not exceed a cumulative total size equal to **eight percent** of the façade on which the sign or signs are mounted, or 30 square feet, whichever is larger.

iii. Secondary signage. Secondary signage shall not be mounted on the same façade as primary signage, and each secondary sign shall not exceed a **cumulative total size equal to four percent** of the façade on which the sign or signs are mounted.

7. Building Signs. The main portion of any building sign shall be either a complex cabinet sign or channel lettering. **A portion of the sign may be used for the logo and may be a simple cabinet sign only when a complex cabinet sign or channel lettering accompanies it.**

4. Internal Directional Signs in all commercial zones

a. Type. Small pedestal, pole, and monument signs are the only freestanding directional signs permitted.

b. Location. All signs shall be located adjacent to and within ten feet of an internal intersection, drive-thru, or similar feature needing directional clarification as identified on an approved site plan.

c. Height. A small pedestal, pole, or monument sign shall not exceed a **height of three feet**.

d. Size: a small pedestal, pole, or monument sign shall not exceed **three square feet** in size.

i. The pole size for an internal directional sign must be at least **six inches in width**.

e. Number. No more than two pedestal or monument signs per internal intersection, drivethru, or similar feature.

silicon **signs**

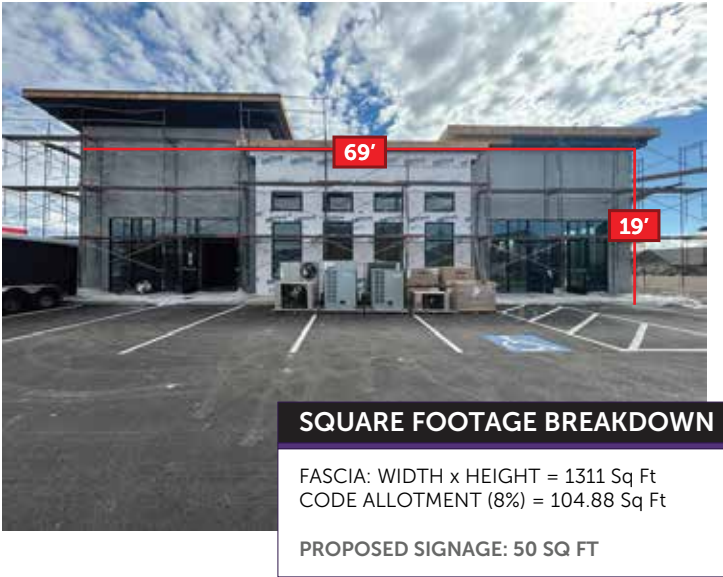
EXTERIOR PACKAGE

CUSTOMER APPROVAL

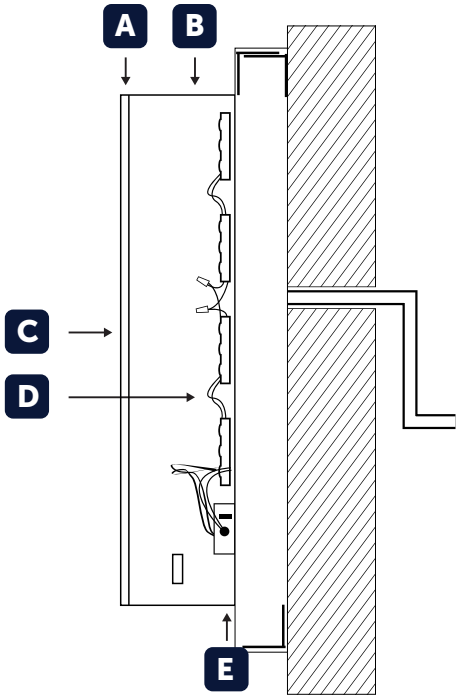
SIGNATURE

LANDLORD APPROVAL

SIGNATURE



- A** FACES: 3/16" WHITE ACRYLIC
- B** RETURNS: 3" BLACK
- C** TRIMCAP: BLACK
- D** ILLUMINATION: SOFT WHITE LED (4000K) 2 FOOT CANDLES
- E** MOUNTING: FLUSH TO 2" BACKER BOX



\*Visible disconnect switch on sign  
\*120V service supplied by others

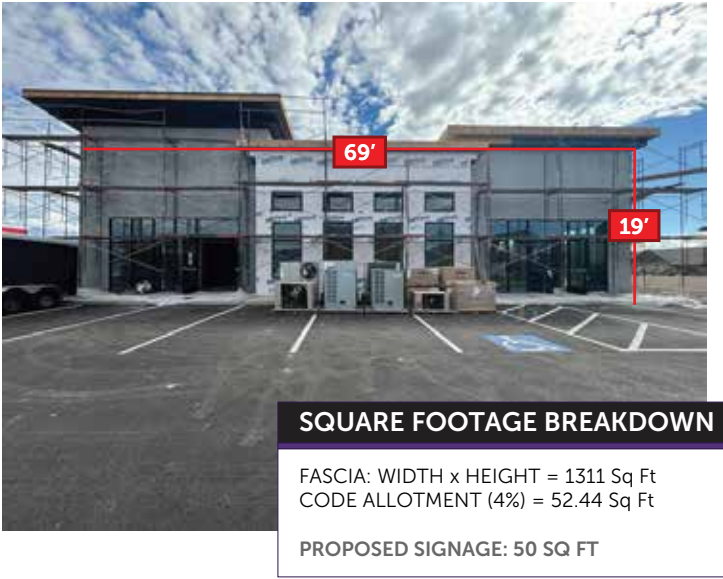
ALL COMPONENTS LISTED

Timer set to 10am-9:30pm  
(Store hours 10am-9pm)

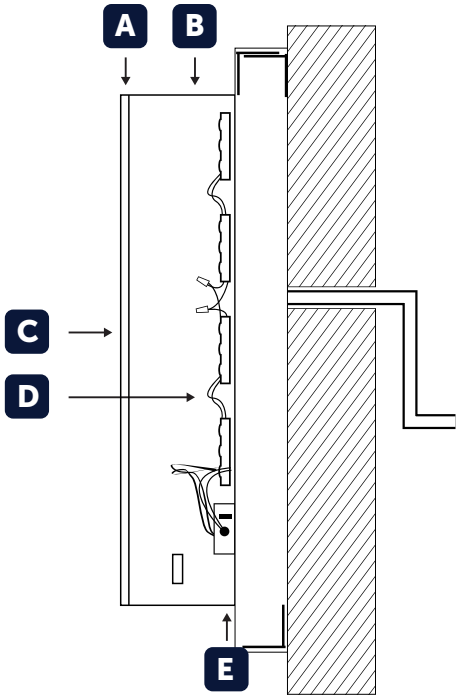
**VINYL SCHEDULE**

**V1: PANTONE 729 C**





- A** FACES: 3/16" WHITE ACRYLIC
- B** RETURNS: 3" BLACK
- C** TRIMCAP: BLACK
- D** ILLUMINATION: SOFT WHITE LED (4000K) 2 FOOT CANDLES
- E** MOUNTING: FLUSH TO 2" BACKER BOX



\*Visible disconnect switch on sign  
\*120V service supplied by others

ALL COMPONENTS LISTED

Timer set to 10am-9:30pm  
(Store hours 10am-9pm)

VINYL SCHEDULE

V1: PANTONE 729 C