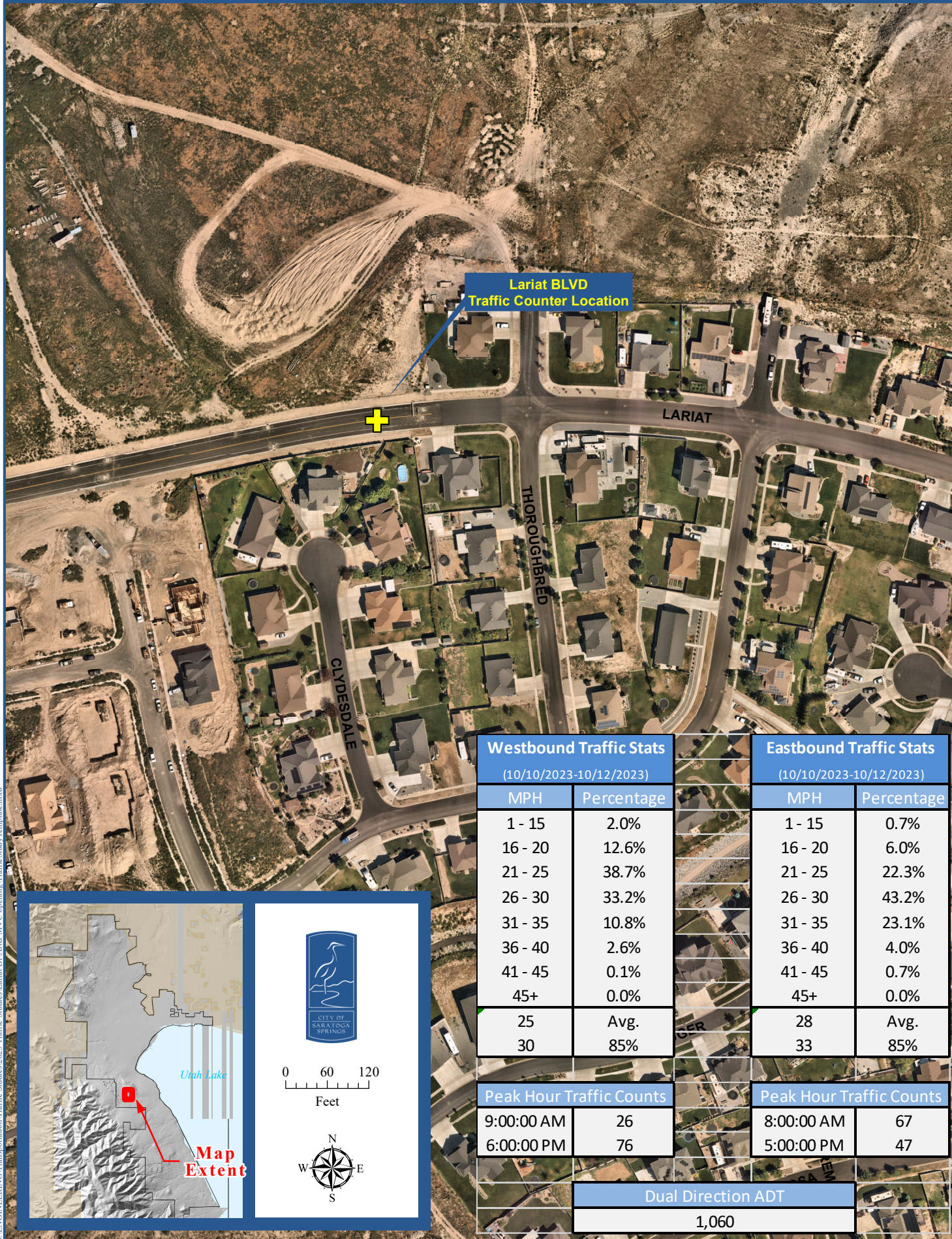
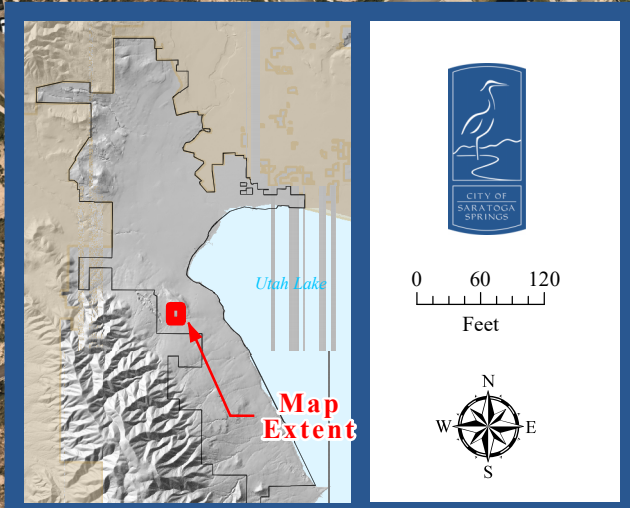


Lariat BLVD Traffic Study October 2023



Westbound Traffic Stats (10/10/2023-10/12/2023)		Eastbound Traffic Stats (10/10/2023-10/12/2023)	
MPH	Percentage	MPH	Percentage
1 - 15	2.0%	1 - 15	0.7%
16 - 20	12.6%	16 - 20	6.0%
21 - 25	38.7%	21 - 25	22.3%
26 - 30	33.2%	26 - 30	43.2%
31 - 35	10.8%	31 - 35	23.1%
36 - 40	2.6%	36 - 40	4.0%
41 - 45	0.1%	41 - 45	0.7%
45+	0.0%	45+	0.0%
25	Avg.	28	Avg.
30	85%	33	85%
Peak Hour Traffic Counts		Peak Hour Traffic Counts	
9:00:00 AM	26	8:00:00 AM	67
6:00:00 PM	76	5:00:00 PM	47
Dual Direction ADT			
1,060			



S:\ENGINEERING\Transportation\Traffic Studies\Lariat Dr\After MVC opening\Traffic Study Template.mxd