

Description:
Fabricated Aluminum Letters
2" depth, halo lit 1/2"
Standoffs.

Fabricated Aluminum Letters
1" depth, 1/2" standoffs

Quantity:
1 set.

Size:
See drawing.

Installation:

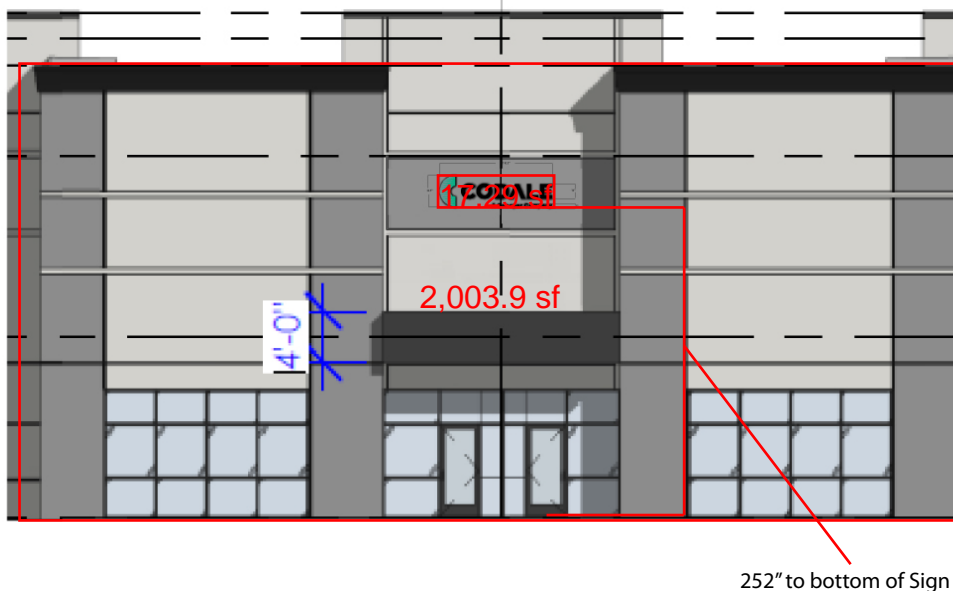
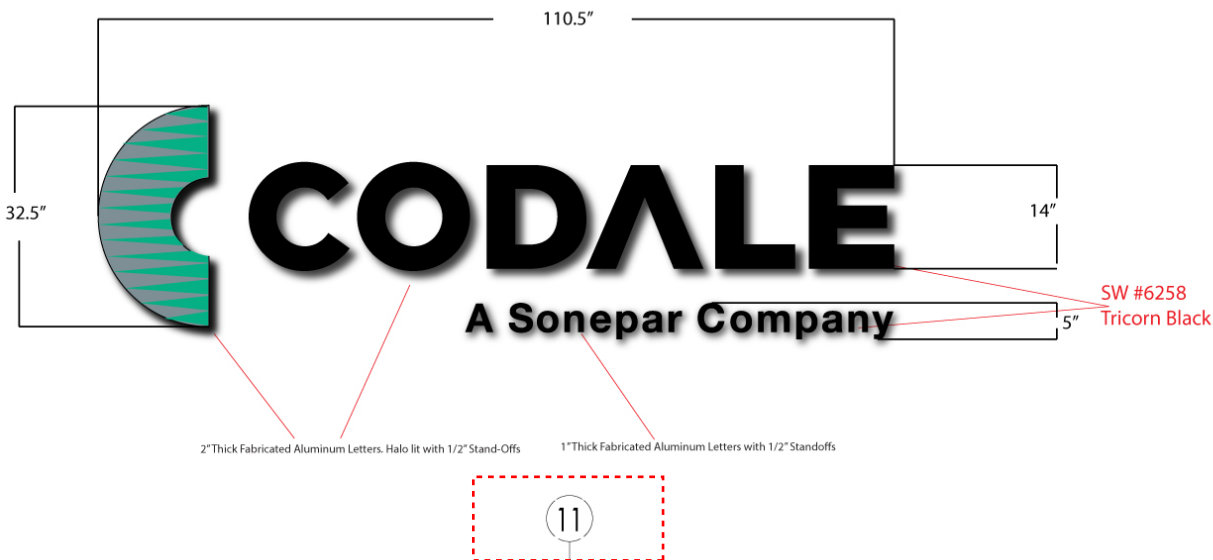
Typefaces:
LOGO.

Colors:
See drawing.

Notes:
Scaling and placement on
photo are approximate.
Sign will be illuminated
between the hours
of 5am and 5pm

☐ Approved, as is
☐ Approved, with change
☐ Revise, Resubmit

Signature _____ Date _____



Landlord Approval

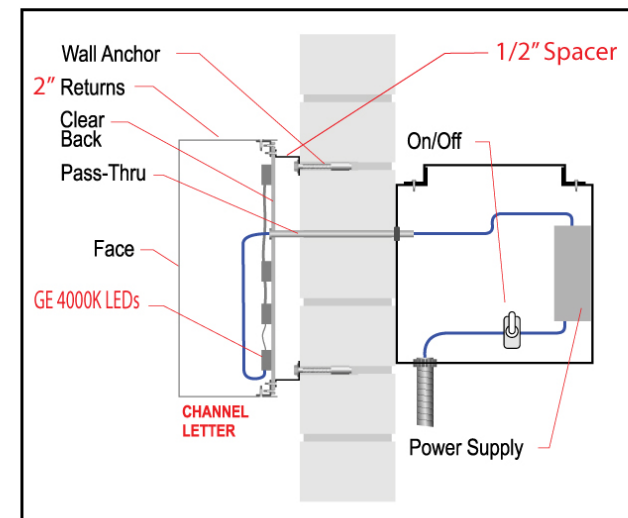
Signature _____

Date _____

Phone # _____

Email _____

Address _____



Back Lit Channel Letter

INVOICE#:

All original artwork contained within shall remain intellectual property of FASTSIGNS® and is not to be duplicated or distributed without the written consent of FASTSIGNS®. We reserve the right to photograph and/or distribute or publish for our company's promotional and marketing needs any work we create for you, including mock-ups and comprehensive presentations, as samples for our portfolio, newsletter, brochures, slide presentations and similar media.

**PLEASE REVIEW YOUR
PROOF THOROUGHLY
BEFORE APPROVING**

At FASTSIGNS® we strive for accuracy and precision, however the final examination and approval of this layout is the responsibility of the customer. Any revisions requested after providing approval will incur additional charges. All colors will be matched as closely as possible, however an exact match can not be guaranteed. NOTE: Colors viewed on screen or from a printed proof are NOT accurate representations of the final colors to be produced. If a specific color-match is needed, please provide a Pantone® color for matching prior to approval.

REVISION #: 0

DATE:

DESIGNER: D.P.

SIGN CENTERED ON GRIDLINE 11

GLAZING LEGEND:

- 1 DOUBLE PANE TINTED GLASS - LOW 'E'
U-FACTOR: 0.38 MAX, SHGC: 0.38 MIN.
- 2 DOUBLE PANE CLEAR TEMPERED GLASS -
LOW 'E' U-FACTOR: 0.38 MAX, SHGC: 0.38 MIN.
- 3 SPANDREL GLASS
- 4 DOUBLE PANE CLEAR GLASS

EXTERIOR ELEVATION COLOR:

-  = PAINTED TILT-UP CONCRETE PANEL.
COLOR - SW 7016 MINDFUL GRAY
-  = PAINTED TILT-UP CONCRETE PANEL.
COLOR - SW 7005 PURE WHITE
-  = METAL PANEL
-  = LIGHT GRAY TINTED GLAZING (OR APPROVED
EQUAL), SEE GLAZING LEGEND
-  = ALUMINUM STOREFRONT : BLACK ANODIZED

GENERAL EXTERIOR FINISH NOTES

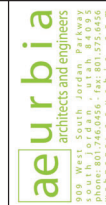
1. ALL EXTERIOR CONCRETE WALLS THAT REQUIRE PAINTING SHALL BE SACK AND PATCHED PRIOR TO PAINTING.
2. REFER TO ELECTRICAL SHEETS FOR ALL EXTERIOR LIGHTING AND COORDINATE ALL NECESSARY POWER LOCATIONS APPROPRIATELY.
3. SEE DETAILS ON A501 FOR TYPICAL CONCRETE REVEALS AND PANEL JOINTS.
4. CAULK AND SEAL ALL EXTERIOR JOINTS WITH APPROVED POLYURETHANE SEALANT.
5. REFER TO MECHANICAL COM-CHECK FOR GLAZING STANDARDS.
6. ALL GLAZING TO MATCH LOOK AND STYLE.

FOR FUTURE TENANTS

PROVIDE MOUNTING DETAILS FOR WALL MOUNTED EXTERIOR SIGNS. ALL POLE-MOUNTED AND MONUMENT SIGNS EXCEEDING 6 FT TALL MUST BE ENGINEERED. AWNINGS THAT PROJECT 2 FT OR MORE REQUIRE ENGINEERING CALCULATIONS.

NOTES

1. CONTRACTOR TO PROVIDE SUBMITTALS FOR APPROVAL.
2. ALL GLAZING WITHIN 24" INCH OF A DOOR/FLOOR SHALL BE TEMPERED.
3. SEE SHEET A702 FOR WINDOW HEADER, JAMB AND SILL DETAILS.
4. ALL EXTERIOR GLASS TO BE DOUBLE PANE TINTED AND TO BE LOW 'E'. VERIFY GLASS SPECIFICATIONS WITH COM-CHECK PROVIDED BY MECHANICAL ENGINEER.
5. REFER TO MECHANICAL COMCHECK FOR MINIMUM DESIGN STANDARDS FOR GLAZING.



1/11/2023 12:35:32

**NORTH SHORE COMMERCE CENTER - 659 N
Saratoga Rd**

Revision Schedule		
MARK	DESCRIPTION	Revision Date
	CITY PLAN REVIEW COMMENTS R1	2022.07.27

AE2022.153
NORTH & SOUTH ENLARGED ELEVATIONS

DATE: 2022.05.09

SHEET 42

A201

COPYRIGHT ©
AEURBIA, LLC.

CONFORMED SET 01/11/2023

0 8' 16' 32'

GRAPHIC SCALE

CONFIRMED SET 2023.01.11