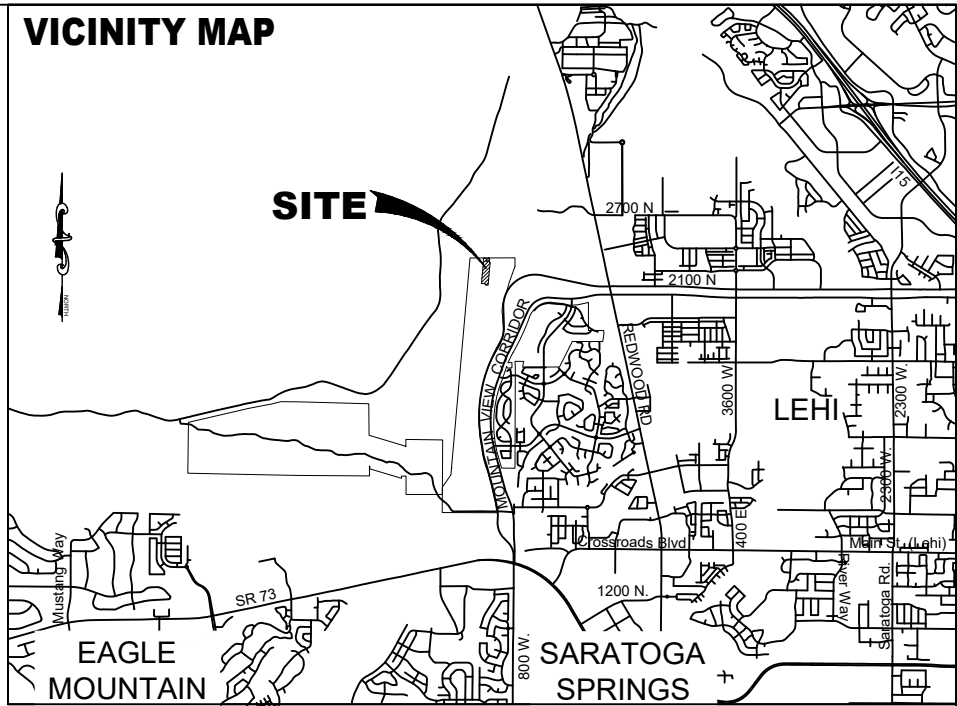
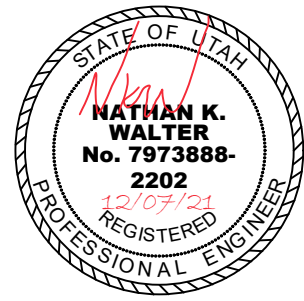


WILDFLOWER - VILLAGE 4 - PLAT J-5
LOCATED IN A PORTION OF THE NORTHWEST QUARTER AND A PORTION
OF THE SOUTHWEST QUARTER OF SECTION 3, TOWNSHIP 5 SOUTH,
RANGE 1 WEST, SALT LAKE BASE AND MERIDIAN
CITY OF SARATOGA SPRINGS, UTAH COUNTY, UTAH



LEI
- A Utah Corporation -
ENGINEERS
SURVEYORS
PLANNERS
3302 N. Main Street
Spanish Fork, UT 84660
Phone: 801.798.0555
Fax: 801.798.9393
office@lei-eng.com
www.lei-eng.com



WILDFLOWER - VILLAGE 4 - PLAT J-5
CITY OF SARATOGA SPRINGS, UTAH COUNTY, UTAH
COVER

REVISIONS	
1	-
2	-
3	-
4	-
5	-

LEI PROJECT #:
2021-0015
DRAWN BY:
TJP/BSR
CHECKED BY:
NKW/GDM
SCALE:
1" = 40'
(PRINTED ON EACH)
DATE:
12/07/2021
SHEET
COVER

SARATOGA SPRINGS CITY ENGINEERING DEPARTMENT
CITY ENGINEER - JEREMY LAPIN, PE
JLAPIN@SARATOGASPRINGSCITY.COM
(801) 766-6506
SARATOGA SPRINGS CITY PLANNING DEPARTMENT
PLANNING DIRECTOR - DAVID STROUD
DSTROUD@SARATOGASPRINGSCITY.COM
(801) 766-9793
OWNER / DEVELOPER
EDGE HOMES
13702 S 200 W B12
DRAPER, UTAH 84020
801-494-0150
ENGINEER
LEI CONSULTING ENGINEERS
AND SURVEYORS
3302 NORTH MAIN
SPANISH FORK, UTAH 84660
(801)798-0555

DOMINION ENERGY GAS
CUSTOMER SERVICE
1-800-323-5517
ROCKY MOUNTAIN POWER
CUSTOMER SERVICE
1-877-221-7070



TABULATIONS				
PLAT J-5				
SINGLE FAMILY	27 LOTS			
DENSITY	4.83 UNITS/ ACRE			
MINIMUM LOT SIZE	0.10 ACRES / 4,332 SF			
MAXIMUM LOT SIZE	0.20 ACRES / 8,645 SF			
AVERAGE LOT SIZE	0.15 ACRES / 6,600 SF			
		ACRES	SQFT	%
TOTAL PROJECT AREA		5.59	243,672	100%
RIGHT-OF-WAY AREA		1.23	53,616	32%
LOT AREA		4.09	178,202	5%
OPEN SPACE AREA		0.00	0	
BUILDABLE LANDS		5.59	243,672	100%
SENSITIVE LANDS		0.00	0.00	0.00
LANDSCAPE AREA (IN PLAT ROW)		0.00	14,316.00	0.00
IMPERVIOUS AREA (IN PLAT ROW)		0.00	8,947.00	0.00

LEGEND			
EXISTING	PROPOSED	DETAILS	
---	---	BOUNDARY LINE	
---	---	STREET CENTERLINE	
---	---	EASEMENT LINE	
---	---	LOT LINES	
---	---	SEWER PIPE	SS-1, ST-7, (*2)
---	---	SEWER MANHOLE	SS-2, SS-2A, (*2)
---	---	4" SEWER SERVICE	SS-3, (*5)
---	---	STORM DRAIN PIPE (RCP)	SD-1, ST-7, (*2)
---	---	STORM DRAIN MANHOLE	SS-2, (*2)
---	---	CURB INLET	SD-2
---	---	COMBO BOX	SD-4
---	---	4'x4' CATCH BASIN	(*2)
---	---	3'x3' CATCH BASIN	(*2)
---	---	INLET/OUTLET W/ GRATE	SD-5
---	---	CULINARY WATER PIPE	CW-1, CW-2, CW-3, ST-7, (*2)
---	---	46" PIPE ELBOW (W)	CW-2, CW-3, (*2)
---	---	22.5" PIPE ELBOW (W)	CW-2, CW-3, (*2)
---	---	11.25" PIPE ELBOW (W)	CW-2, CW-3, (*2)
---	---	FIRE HYDRANT	CW-4
---	---	3/4" SERVICE & METER (W)	CW-5
---	---	PRV (W)	CW-10A, CW-10B, CW-15
---	---	AIR-VAC VALVE (W)	
---	---	2" BLOW-OFF (W)	CW-13, CW-15
---	---	VALVE (W & SW)	(*1)(*2)
---	---	TEE	CW-2, (*2)
---	---	CROSS	CW-2, (*2)
---	---	SECONDARY WATER PIPE	PI-1, PI-2, ST-7, (*2)
---	---	46" PIPE ELBOW (SW)	PI-2, (*2)
---	---	22.5" PIPE ELBOW (SW)	PI-2, (*2)
---	---	11.25" PIPE ELBOW (SW)	PI-2, (*2)
---	---	1" SINGLE SW SERVICE	PI-3, PI-5A, PI-5C
---	---	1-1/2" DUAL SW SERVICE	PI-3, PI-5B, PI-5C
---	---	SW SERVICE TO PARKS	PI-4
---	---	AIR-VAC VALVE (SW)	PI-8, PI-13
---	---	BACKFLOW PREVENTER	PI-11
---	---	2" BLOW-OFF (SW)	PI-12, PI-13
---	---	30" C&G (COLLECTOR)	ST-1, ST-2A
---	---	24" C&G (LOCAL)	ST-1, ST-2C
---	---	24" SHED C&G	ST-1, ST-2F
---	---	SIDEWALK	ST-1
---	---	STOP SIGN	ST-28
---	---	STREET SIGN	ST-29
---	---	MONUMENT	ST-9, (*3)
---	---	SPRINKLER CONDUIT	LS-14, LS-15, DET. 1 SH. D-4
---	---	FENCE	
---	---	STREET LIGHT LOCAL	LP-1, LP-1B, LP-1C, LP-4, LP-6
---	---	STREET LIGHT COLLECTOR	LP-2, LP-2B, LP-2C, LP-5, LP-6
---	---	POWER POLE	
---	---	FIBER OPTIC	
---	---	DITCH	
---	---	GAS	
---	---	OVERHEAD POWER	
---	---	FLOW ARROW	
---	---	CONTOURS	
---	---	100 YEAR FLOOD ROUTE	
---	---	MATCH LINE	
---	---	DRIVE APPROACH	ST-4
---	---	ADA RAMP	ST-5A, ST-5B, ST-5C, ST-5E
---	---	TRAIL	ST-15A, ST-34, (*4)

(*1) CULINARY & SECONDARY WATER LINES LESS THAN 12" TO BE GATE VALVES, LINES 12" & LARGER REQUIRE BUTTERFLY VALVES
(*2) SEE PLAN & PROFILE FOR SIZE & MATERIAL
(*3) SEE LANDSCAPE DESIGN FOR NUMBER OF CONDUITS & SIZES
(*4) SEE PLAN & PROFILE FOR WIDTH & DESIGN MATERIALS
(*5) SEWER SERVICE MINIMUM SLOPE 2%

U:\0 - LEI PROJECTS\2021\2021-0015 WILDFLOWER VILL 4 - SS\2021\DWG\2021-0015 PLAT J-5 SHEETS.DWG 12/8/2021 4:48 PM

U:\0 - LEI PROJECTS\2021\2021-0015 WILDFLOWER VLL 4 - SS\2021\DWG\5-2021-0015 PLAT J-5 SHEETS.DWG 12/20/21 10:16 AM

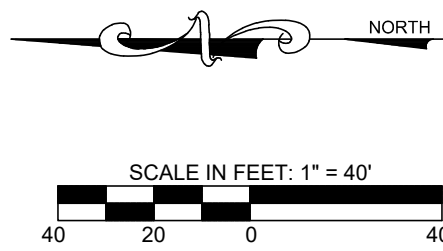
NOTE:
A RIGHT-OF-WAY ENCROACHMENT PERMIT MUST BE
OBTAINED FROM THE CITY OF SARATOGA SPRINGS PRIOR
TO DOING ANY WORK IN THE EXISTING RIGHT-OF-WAY.
CONTACT CHRIS KLINGEL AT 801-766-9793, EXT. 118.

SHEET NOTES

- SEE GRADING & DRAINAGE PLAN FOR GRADING REQUIREMENTS.
- SEE SIGNAGE & STRIPING PLAN FOR SIGN LOCATIONS.
- STREET SECTIONS TO BE INSTALLED PER CITY STANDARDS. RESIDENTIAL
STREETS 59 FOOT RIGHT-OF-WAY TO BE INSTALLED PER CITY DETAIL ST-8.
PUBLIC RESIDENTIAL STREETS TO UTILIZE STREET PAVEMENT SECTION
DETAIL 2 SHEET C-907. PRIVATE DRIVES 26 FOOT RIGHT-OF-WAY TO BE
INSTALLED PER DETAIL 1 SHEET C-909.

DATA TABLE

	SF	LF	EA
ASPHALT	26,765		
SUB-BASE	26,765		
ROAD BASE	26,765		
CURB AND GUTTER		1789	
5' SIDEWALK		1789	
4' TRAIL		0	
8' TRAIL		615	
DRIVE APPROACH			27
ADA RAMP			0
MONUMENTS			1
STREET LIGHT (RES)			3
STREET LIGHT (ART)			0



EXISTING DRAINAGE CHANNEL
EXISTING 8' ASPHALT TRAIL
EXISTING 4' DIRT TRAIL

2224

2223

2222

SALVIA DRIVE

2221

2220

2219

2218

2217

2216

2215

2214

2213

2212

2211

2210

2209

2225

2226

2227

2228

2229

2230

2231

2232

2233

2234

2235

DANDELION DRIVE

EXISTING DRAINAGE CHANNEL
EXISTING 8' ASPHALT TRAIL
EXISTING 4' DIRT TRAIL

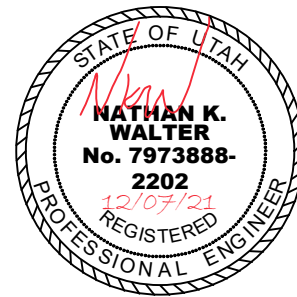
LEGEND

EXISTING	PROPOSED	DETAILS	EXISTING	PROPOSED	DETAILS	EXISTING	PROPOSED	DETAILS
---	---	BOUNDARY LINE	---	---	2" BLOW-OFF (W)	---	---	STREET LIGHT LOCAL
---	---	STREET CENTERLINE	---	---	VALVE (W & SW)	---	---	STREET LIGHT COLLECTOR
---	---	EASEMENT LINE	---	---	TEE	---	---	POWER POLE
---	---	LOT LINES	---	---	CROSS	---	---	DITCH
---	---	SEWER PIPE	---	---	SECONDARY WATER PIPE	---	---	FIBER OPTIC
---	---	SEWER MANHOLE	---	---	45" PIPE ELBOW (SW)	---	---	GAS
---	---	4" SEWER SERVICE	---	---	22.5" PIPE ELBOW (SW)	---	---	OVERHEAD POWER
---	---	STORM DRAIN PIPE (RCP)	---	---	11.25" PIPE ELBOW (SW)	---	---	FLOW ARROW
---	---	STORM DRAIN MANHOLE	---	---	1" SINGLE SW SERVICE	---	---	CONTOURS
---	---	CURB INLET	---	---	1-1/2" DUAL SW SERVICE	---	---	100 YEAR FLOOD ROUTE
---	---	COMBO BOX	---	---	SW SERVICE TO PARKS	---	---	MATCH LINE
---	---	4x4" CATCH BASIN	---	---	AIR-VAC VALVE (SW)	---	---	DRIVE APPROACH
---	---	INLET/OUTLET W/ GRATE	---	---	BACKFLOW PREVENTER	---	---	ADA RAMP
---	---	CULINARY WATER PIPE	---	---	2" BLOW-OFF (SW)	---	---	TRAIL
---	---	45" PIPE ELBOW (W)	---	---	30" C&G (COLLECTOR)	---	---	
---	---	22.5" PIPE ELBOW (W)	---	---	24" C&G (LOCAL)	---	---	
---	---	11.25" PIPE ELBOW (W)	---	---	24" SHED C&G	---	---	
---	---	FIRE HYDRANT	---	---	SIDEWALK	---	---	
---	---	3/4" SERVICE & METER (W)	---	---	STOP SIGN	---	---	
---	---	PRV (W)	---	---	STREET SIGN	---	---	
---	---	AIR-VAC VALVE (W)	---	---	MONUMENT	---	---	
---	---		---	---	SPRINKLER CONDUIT	---	---	
---	---		---	---	FENCE	---	---	

(*)CULINARY & SECONDARY WATER LINES LESS THAN 12" TO BE GATE VALVES, LINES 12" & LARGER REQUIRE BUTTERFLY VALVES
(*)SEE PLAN & PROFILE FOR SIZE & MATERIAL
(*)SEE LANDSCAPE DESIGN FOR NUMBER OF CONDUITS & SIZES
(*)SEE PLAN & PROFILE FOR WIDTH & DESIGN MATERIALS
(*)SEWER SERVICE MINIMUM SLOPE 2%

LEI
- A Utah Corporation -
ENGINEERS
SURVEYORS
PLANNERS

3302 N. Main Street
Spanish Fork, UT 84660
Phone: 801.798.0555
Fax: 801.798.9393
office@lei-eng.com
www.lei-eng.com



WILDFLOWER - VILLAGE 4 - PLAT J-5
CITY OF SARATOGA SPRINGS, UTAH COUNTY, UTAH
OVERALL SITE PLAN

REVISIONS

1	-
2	-
3	-
4	-
5	-

LEI PROJECT #:

2021-0015

DRAWN BY:

TJP/BSR

CHECKED BY:

NKW/GDM

SCALE:

1" = 40'

(PRINTED ON SCALE)

DATE:

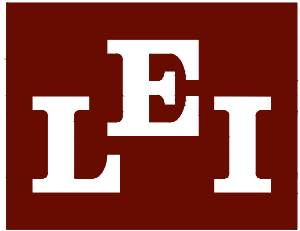
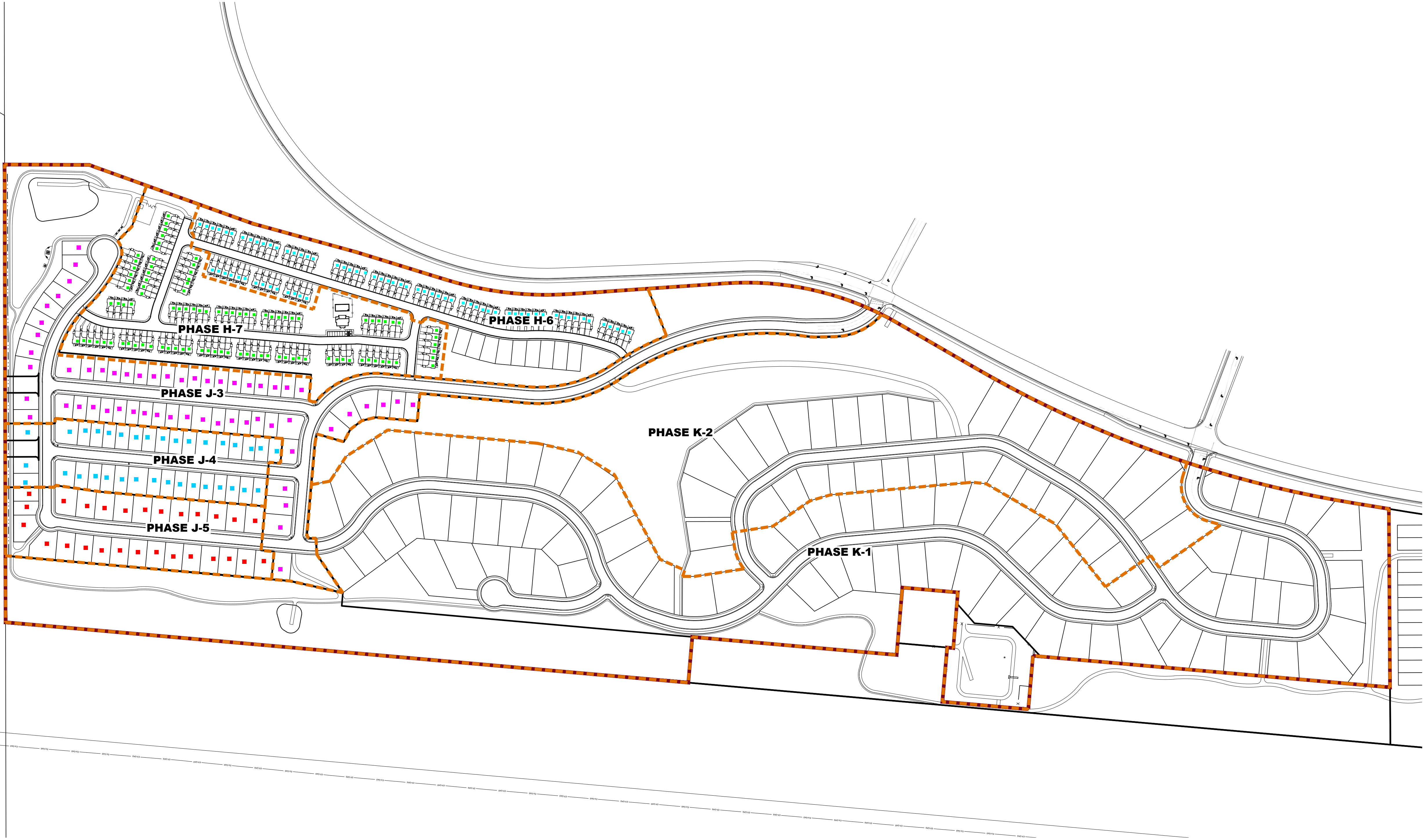
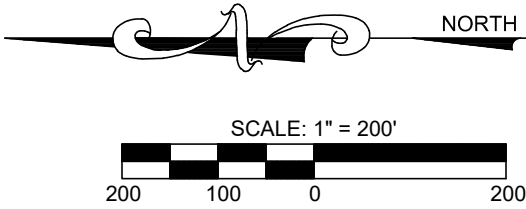
12/07/2021

SHEET

C-201



NOTE:
PHASES MAY BE CONSTRUCTED OUT OF ORDER & SUBJECT TO CHANGE.



ENGINEERS
SURVEYORS
PLANNERS

3302 N. Main Street
Spanish Fork, UT 84660
Phone: 801.798.0555
Fax: 801.798.9393
office@lei-eng.com
www.lei-eng.com

WILDFLOWER
SARATOGA SPRING, UTAH
VILLAGE 4 - PHASING PLAN

REVISIONS

1	-	-
2	-	-
3	-	-
4	-	-
5	-	-

LEI PROJECT #:

2013-0902

DRAWN BY:

TJP

DESIGNED BY:

NKW

SCALE:

1" = 200'

DATE:

7/21/2021

EXHIBIT

1

LANDSCAPE PLAN SPECIFICATIONS

- PART I - GENERAL
- 1.1 SUMMARY
- A. This section includes landscape procedures for the Project including all labor, materials, and installation necessary, but not limited to the following:
- 1. Site Conditions
 - 2. Guarantees
 - 3. Maintenance
 - 4. Soil Amendments
 - 5. Fine Grading
 - 6. Landscape Edging
 - 7. Furnish and Installing Plant
 - 8. Turf Planting
 - 9. Weed Barrier
- 1.2 SITE CONDITIONS
- A. Examination: Before submitting a Bid, each Contractor shall carefully examine the Contract Documents; shall visit the site of the Work; shall fully inform themselves as to all existing conditions and limitations; and shall include in the Bid the cost of all items required by the Contract Documents are at a variance with the applicable laws, building codes, rules, regulations, or contain obvious erroneous or uncoordinated information, the Contractor shall promptly notify the Project Representative and the necessary changes shall be accomplished by Addendum.
- B. Protection: Contractor to conduct the Work in such a manner to protect all existing underground utilities or structures. Contractor to repair or replace any damaged utility or structure using identical materials to match existing at no expense to the Owner.
- C. Irrigation System: Do not begin planting until the irrigation system is completely installed, is adjusted for full coverage and is completely operational.
- 1.3 PERMITS
- A. Blue Stake/ Dig Line: When digging is required, "Blue Stake" or "Dig Line" the work site and identify the approximate location of all known underground utilities or structures.
- 1.4 PLANT DELIVERY, QUALITY, AND AVAILABILITY
- A. Unauthorized substitutions will not be accepted. If proof is submitted that specific plants or plant sizes are unobtainable, written substitution requests will be considered for the nearest equivalent plant or size. All substitution requests must be made in writing and preferably before the bid due date.
- 1.5 FINAL INSPECTION
- A. All plants will be inspected at the time of Final Inspection prior to receiving a Landscape Substantial Completion for conformance to specified planting procedures, and for general appearance and vitality. Any plant not approved by the Project Representative will be rejected and replaced immediately.
- 1.6 LANDSCAPE SUBSTANTIAL COMPLETION
- A. A Substantial Completion Certificate will only be issued by the Project Representative for "landscape and irrigation" in their entirety. Substantial Completion will not be proportioned to be designated areas of a project.
- 1.7 MAINTENANCE
- A. Plant Material: The Contractor is responsible to maintain all planted materials in a healthy and growing condition for 30 days after receiving a Landscape Substantial Completion at which time the Guarantee period commences. This maintenance is to include mowing, weeding, cultivating, fertilizing, monitoring water schedules, controlling insects and diseases, re-guying and staking, and all other operations of care necessary for the promotion of root growth and plant life so that all plants are in a condition satisfactory at the end of the guarantee period. The Contractor shall be held responsible for failure to monitor watering operations and shall replace any and all plant material that is lost due to improper application of water.
- 1.8 GUARANTEE
- A. Guarantee: A guarantee period of one year shall begin from end of maintenance period and final acceptance for trees, shrubs, and ground covers. All plants shall grow and be healthy for the guarantee period and trees shall live and grow in acceptable upright position. Any plant not alive, in poor health, or in poor condition at the end of the guarantee period will be replaced immediately. Any plant will only need to be replaced once during the guarantee period. Contractor to provide documentation showing where each plant to be replaced is located. Any outside factors, such as vandalism or lack of maintenance on the part of the Owner, shall not be part of the guarantee

- PART II - PRODUCTS
- 2.1 LANDSCAPE MATERIALS
- A. Tree Staking: All trees shall be staked for one year warranty period. All trees not plumb shall be replaced. Staked trees shall use vinyl tree ties and tree stakes two (2) inch by two (2) by eight (8) foot common pine stakes used as shown on the details.
- B. Tree Wrap: Tree wrap is not to be used.
- C. Mulch/Rock: See Plans. All planter beds to receive a minimum 3" layer for trees, shrubs, and perennials and 1" for groundcovers.
- D. Weed Barrier: DeWitt 5 oz. weed barrier fabric. Manufactured by DeWitt Company, dewittcompany.com or approved equal.
- E. Tree, Shrub, and Grass Backfill Mixture: Backfill mixture to be 75% native soil and 25% topsoil, thoroughly mixed together prior to placement.
- F. Topsoil: Required for turf areas, planter beds and Backfill Mixture. Acceptable topsoil shall meet the following standards:
- a. pH: 5.5-7.5
 - b. EC (electrical conductivity): < 2.0 mmhos per centimeter
 - c. SAR (sodium absorption ration): < 3.0
 - d. % OM (percent organic matter): >1%
 - e. Texture (particle size per USDA soil classification): Sand <70%; Clay < 30%; Silt < 70%; Stone fragments (gravel or any soil particle greater than two (2) mm in size) < 5% by volume.
- G. Turf Sod: All sod shall be 18 month old as specified on plans (or approved equal) that has been cut fresh the morning of installation. Only sod that has been grown on a commercial sod farm shall be used. Only use sod from a single source.
- H. Landscape Curb Edging: six (6) inches by four (4) inches extruded concrete curb made up of the following materials:
- a. Washed mortar sand free of organic material.
 - b. Portland Cement (see concrete spec. below for type)
 - c. Reinforced fiber - Specifically produced for compatibility with aggressive alkaline environment of Portland cement-based composites.
 - d. Only potable water for mixing.
- I. Landscape Metal Edging: 5.5" steel edging with 18" dowels into the ground for stabilization.

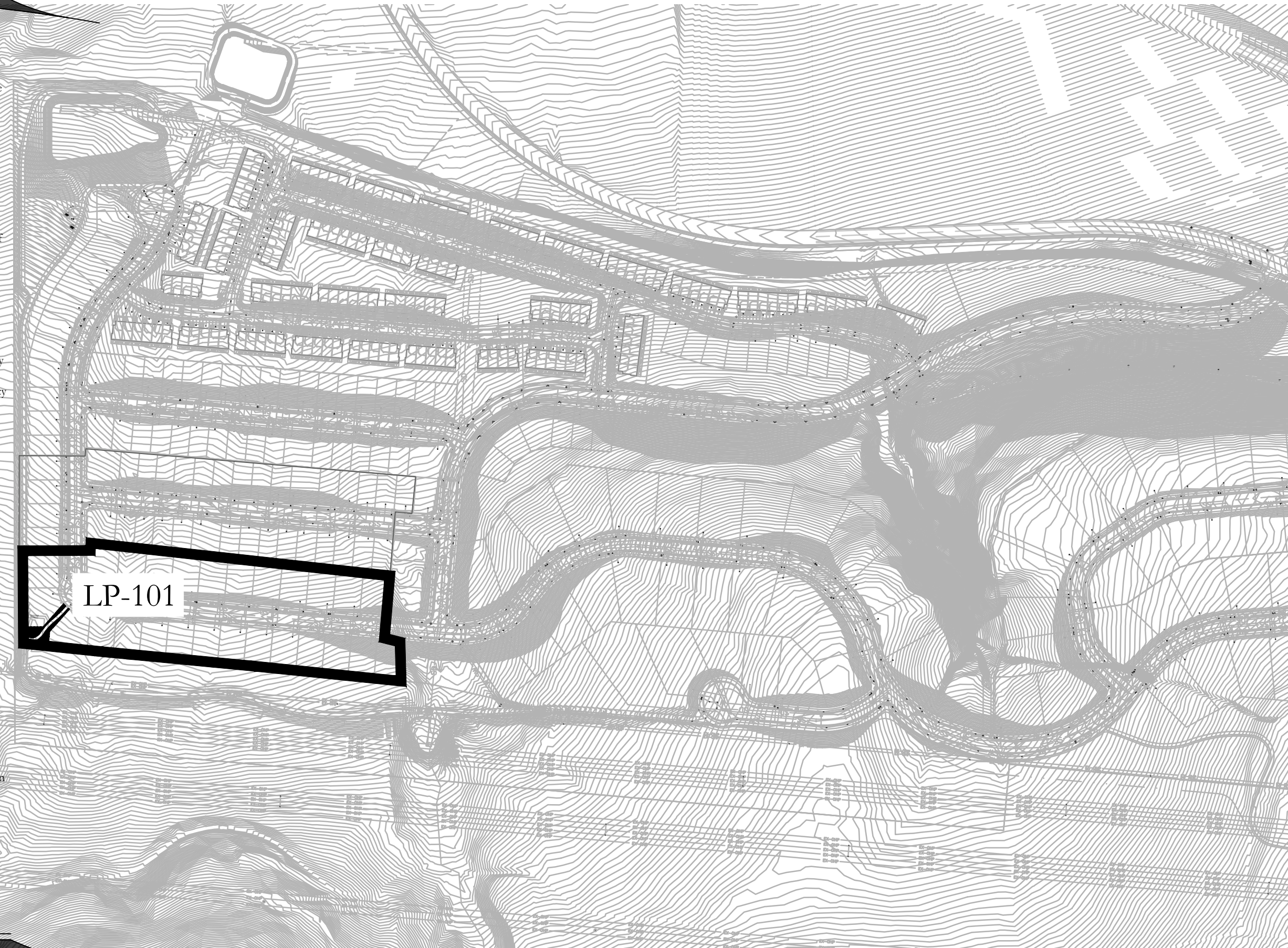
- PART III - EXECUTION
- 3.1 GRADING
- A. Topsoil Preparation: Grade planting areas according to the grading plan. Eliminate uneven areas and low spots. Provide for proper grading and drainage.
- B. Topsoil Placement: Slope surfaced away from building at two (2) percent slope with no pockets of standing water. Establish finish grades of one (1) inches for planters below grade of adjacent paved surfaced. Provide neat, smooth, and uniform finish grades. Remove surplus sub-soil and topsoil from the site.
- C. Compaction: compaction under hard surface areas (asphalt paths and concrete surfaces) shall be ninety-five (95) percent. Compaction under planting areas shall be between eighty-five (85) and ninety (90) percent.
- 3.2 TURF GRADING
- A. The surface on which the sod is to be laid shall be firm and free from footprints, depressions, or undulations of any kind. The surface shall be free of all materials larger than 1/2" in diameter.
- B. The finish grade of the topsoil adjacent to all sidewalks, mow-strips, etc. prior to the laying of sod, shall be set such that the crown of the grass shall be at the same level as the adjacent concrete or hard surface. No exceptions.
- 3.3 PLANTING OPERATIONS
- A. Review the exact locations of all trees and shrubs with the Project Representative for approval prior to the digging of any holes. Prepare all holes according to the details on the drawings.
- B. Water plants immediately upon arrival at the site. Maintain in moist condition until planted.
- C. Before planting, locate all underground utilities prior to digging. Do not place plants on or near utility lines.
- D. The tree planting hole should be the same depth as the root ball, and two times the diameter of the root ball.
- E. Trees must be placed on undisturbed soil at the bottom of the planting hole.
- F. The tree hole depth shall be determined so that the tree may be set slightly high of finish grade, 1" to 2" above the base of the trunk flare, using the top of the root ball as a guide.
- G. Plant immediately after removal of container for container plants.

- H. Set tree on soil and remove all burlap, wire baskets, twine, wrappings, etc. before beginning and backfilling operations. Do not use planting stock if the ball is cracked or broken before or during planting operation.
- I. Apply vitamin B-1 root stimulator at the rate of one (1) tablespoon per gallon.
- J. Upon completion of backfilling operation, thoroughly water tree to completely settle the soil and fill any voids that may have occurred. Use a watering hose, not the area irrigation system. If additional prepared topsoil mixture needs to be added. It should be a coarser mix as required to establish finish grade as indicated on the drawings.
- K. The amount of pruning shall be limited to the minimum necessary to remove dead or injured twigs and branches. All cuts, scars, and bruises shall be properly treated according to the direction of the Project Representative. Proper pruning techniques shall be used. Do not leave stubs and do not cut the leader branch. Improper pruning shall be cause for rejection of the plant material.
- L. Prepare a watering circle of 2' diameter around the trunk. For conifers, extend the watering well to the drip line of the tree canopy. Place mulch around the planted trees.
4. TURF - SOD LAYING
- A. Top Soil Amendments: Prior to laying sod, commercial fertilizer shall be applied and incorporated into the upper four (4) inches of the topsoil at a rate of four pounds of nitrogen per one thousand (1,000) square feet. Adjust fertilization mixture and rate of application as needed to meet recommendations given by topsoil analysis.
- B. Fertilization: Three weeks after sod placement fertilize the turf at a rate of 1/2 pound of nitrogen per 1000 square feet. Use fertilizer specified above. Adjust fertilization mixture and rates to meet recommendations given by topsoil analysis.
- C. Sod Availability and Condition: Sod is to be delivered to the site in good condition. It is to be inspected upon arrival and installed within 24 hours. Sod is to be moist and cool to ensure that decomposition has not begun and is to be free of pests, diseases, or blemishes. The Contractor shall satisfy himself as to the existing conditions prior to any construction. The Contractor shall be fully responsible for furnishing and laying all sod required on the plans. He shall furnish new sod as specified above and lay it so as to completely satisfy the intent and meaning of the plans and specification at no extra cost to the owner. In the case of any discrepancy in the amount of sod to be removed or amount to be used, it shall be the Contractor's responsibility to report such to the Project Representative prior to commencing the work.
- D. Sod Laying: The surface upon which the new sod to be laid will be prepared as specified in the detail and be lightly watered before laying. Areas where sod is to be laid shall be cut trimmed, or shaped to receive full width sod (minimum twelve (12) inches). No partial strip or pieces will be accepted.
- E. Sod shall be tamped lightly as each piece is set to ensure that good contact is made between edges and also the ground. If voids or holes are discovered, the sod piece(s) is (are) to be raised and topsoil is to be used to fill in the areas until level. Sod laid on any sloped areas shall be anchored with wooden dowels or other materials which are accepted by the grass sod industry.
- F. Sod shall be rolled with a roller that is at least 50% full immediately after installation to ensure the full contact with soil is made.
- G. Apply water directly after laying sod. Rainfall is not acceptable.
- H. Watering of the sod shall be the complete responsibility of the Contractor by whatever means necessary to establish the sod in an acceptable manner to the end of the Maintenance period. If an irrigation system is in place on the site, but for whatever reason, water is not available in the system. It is the responsibility of the Contractor to water the sod by whatever means, until the sod is accepted by the Project Representative.
- I. Protection of the newly laid sod shall be the complete responsibility of the Contractor. The Contractor shall provide acceptable visual barriers, to include barricades set appropriate distances with strings or tapes between barriers, as an indication of new work. The Contractor is to restore any damaged areas caused by others (including vehicular traffic), erosion, etc. until such time as the lawn is accepted by the Owner.
- J. All sod that has not been laid within 24 hours shall be deemed unacceptable and will be removed from the site.

- 3.5 WEED BARRIER
- A. For the health of the soil and the microorganisms, weed barrier is not recommended. If use is required or requested, do not place on annual or grass areas.
- B. Cut weed barrier back to the edge of the plant rootball.
- C. Overlap rows of fabric min. 6"
- D. Stable fabric edges and overlaps to ground.
- END OF SECTION

LANDSCAPE NOTES

- INSTALLATION
- LANDSCAPE CONTRACTOR SHALL HAVE ALL UTILITIES BLUE STAKED PRIOR TO DIGGING. ANY DAMAGE TO UTILITIES SHALL BE REPAIRED AT CONTRACTOR'S EXPENSE WITH NO ADDITIONAL COST TO THE OWNER.
 - DURING THE BIDDING AND INSTALLATION PROCESS, THE LANDSCAPE CONTRACTOR IS RESPONSIBLE FOR VERIFYING QUANTITIES OF ALL MATERIALS. IF DISCREPANCIES EXIST, THE PLAN SHALL DICTATE QUANTITIES TO BE USED.
 - ALL PLANT MATERIAL SHALL BE PLANTED ACCORDING TO INTERNATIONAL SOCIETY OF ARBORICULTURE (ISA) STANDARDS WITH CONSIDERATION TO INDIVIDUAL SOIL AND SITE CONDITIONS, AND NURSERY CARE AND INSTALLATION INSTRUCTIONS.
 - SELECTED PLANTS WILL BE ACCORDING TO THE PLANT LEGEND. IF SUBSTITUTIONS ARE NECESSARY, PROPOSED LANDSCAPE CHANGES MUST BE SUBMITTED TO THE LANDSCAPE ARCHITECT FOR APPROVAL PRIOR TO LAYING SOD.
 - SHOULD THE SITE REQUIRE ADDITIONAL TOPSOIL, REFER TO SOIL TEST WHEN MATCHING EXISTING SOIL. IF A MATCHING SOIL IS NOT LOCATABLE, A 6" DEPTH OF SANDY LOAM TOPSOIL (MIXED PRIOR TO SPREADING WITH 2-3" OF QUALITY COMPOST) CAN BE INCORPORATED INTO THE EXISTING SOIL USING THE FOLLOWING DIRECTIONS: SCARIFY TOP 6" OF EXISTING SUBSOIL AND INCORPORATE 3" OF NEW COMPOST ENRICHED TOPSOIL. SPREAD REMAINING TOPSOIL TO REACH FINISHED GRADE.
 - SOD FOR NEW LAWN AREAS SHALL BE A DROUGHT TOLERANT VARIETY. FINE LEVEL ALL AREAS PRIOR TO LAYING SOD.
 - EDGING, AS INDICATED ON PLAN, IS TO BE INSTALLED BETWEEN ALL LAWN AND PLANTER AREAS. ANY TREES LOCATED IN LAWN MUST HAVE A 4-6' TREE RING OF THE SAME EDGING.
 - IF REQUIRED BY CITY OR OWNER SPECIFIED, DeWitt 5 OZ WEED BARRIER FABRIC TO BE INSTALLED IN ALL PLANTER AREAS EXCEPT UNDER ANNUAL PLANTING AREAS AS SHOWN ON PLAN. WEED BARRIER SHALL BE CUT BACK FROM EACH PLANT TO THE DIAMETER OF THE ROOTBALL.
 - ROCK MULCH (INORGANIC MULCH) TO BE APPLIED AT THE FOLLOWING DEPTHS: 3" IN ALL TREE, SHRUB, AND PERENNIAL PLANTER AREAS; ANNUAL PLANTING AREAS AS SHOWN ON PLAN TO RECEIVE 4" OF SOIL AID MATERIAL (ORGANIC MULCH); NO MULCH SHALL BE PLACED WITHIN 12" OF BASE OF TREE AND 6" WITHIN BASE OF SHRUBS AND PERENNIALS.
 - A NEW UNDERGROUND, AUTOMATIC IRRIGATION SYSTEM IS TO BE INSTALLED BY CONTRACTOR IN ALL LANDSCAPED AREAS. LAWN AREAS TO RECEIVE AT LEAST 100% HEAD TO HEAD COVERAGE AND PLANTER AREAS TO RECEIVE A FULL DRIP SYSTEM TO EACH TREE AND SHRUB. POINT SOURCE DRIP OR IN-LINE DRIP TUBING TO BE SECURED AT EDGE OF ROOTBALL, NOT AGAINST TRUNK. SEE IRRIGATION PLAN.
 - UPON REQUEST, A PLANT GUIDE IS AVAILABLE WITH OUR RECOMMENDATIONS REGARDING WEED BARRIER, PLANT CARE AND MAINTENANCE.
- INSTALLER RESPONSIBILITIES AND LIABILITIES
- THESE PLANS ARE FOR BASIC DESIGN LAYOUT AND INFORMATION. LANDSCAPE CONTRACTOR IS REQUIRED TO USE TRADE KNOWLEDGE FOR IMPLEMENTATION. OWNER ASSUMES NO LIABILITIES FOR INADEQUATE ENGINEERING CALCULATIONS, MANUFACTURER PRODUCT DEFECTS, INSTALLATION OF ANY LANDSCAPING AND COMPONENTS, OR TIME EXECUTION.
 - LANDSCAPE CONTRACTOR IS RESPONSIBLE AND LIABLE FOR INSTALLATION OF ALL LANDSCAPING AND IRRIGATION SYSTEMS INCLUDING CODE REQUIREMENTS, TIME EXECUTIONS, INSTALLED PRODUCTS AND MATERIALS.
- GRADING AND DRAINAGE REQUIREMENTS
- AS PER CODE, ALL GRADING IS TO SLOPE AWAY FROM ANY STRUCTURE. SURFACE OF THE GROUND WITHIN 10' FEET OF THE FOUNDATION SHOULD DRAIN AWAY FROM THE STRUCTURE WITH A MINIMUM FALL OF 6"
 - AS PER CODE, FINISHED GRADE WILL NOT DRAIN ON NEIGHBORING PROPERTIES
 - A MINIMUM OF 6" OF FOUNDATION WILL BE LEFT EXPOSED AT ALL CONDITIONS
 - LANDSCAPE CONTRACTOR TO MAINTAIN OR IMPROVE FINAL GRADE AND PROPER DRAINAGE ESTABLISHED BY EXCAVATOR, INCLUDING BUT NOT LIMITED TO ANY MAINTENANCE, PRESERVATION, OR EXAGGERATION OF SLOPES, BERMS, AND SWALES.
 - LANDSCAPE CONTRACTOR IS RESPONSIBLE TO CORRECT ANY DAMAGED OR IMPROPER WATERFLOW OF ALL SWALES, BERMS, OR GRADE.
 - DEVICES FOR CHANNELING ROOF RUN-OFF SHOULD BE INSTALLED FOR COLLECTION AND DISCHARGE OF RAINWATER AT A MINIMUM OF 10' FROM THE FOUNDATION, OR BEYOND THE LIMITS OF FOUNDATION WALL BACKFILL, WHICHEVER DISTANCE IS GREATER




SITE MATERIALS LEGEND

SYMBOL	LANDSCAPE DESCRIPTION	QTY
	6" SOUTH TOWN COBBLE ROCK PLACED OVER WEED BARRIER FABRIC. COLOR TO BE LIGHT EARTH TONES TO CONTRAST OTHER ROCK TO BE LEVEL WITH AND NOT MORE THAN 1" ABOVE ADJACENT CURBS, WALKS, OR CONCRETE PLANTING EDGES. PROVIDE 7" DEPTH	5,590 sf

ISSUE DATE		PROJECT NUMBER		PLAN INFORMATION	
12/17/2021		UT20120			
NO.	REVISION	DATE			
1	XXXX	XX-XX-XX			
2					
3					
4					
5					
6					
7					

811



BLUE STAKES OF UTAH

UTILITY NOTIFICATION CENTER, INC.

1-800-662-4111


www.bluestakes.org

0'

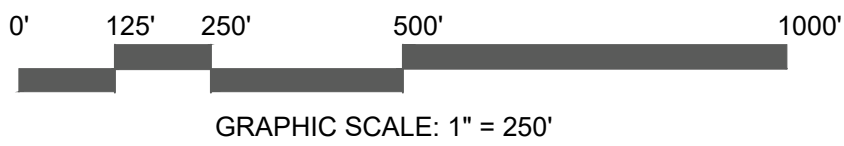
125'

250'

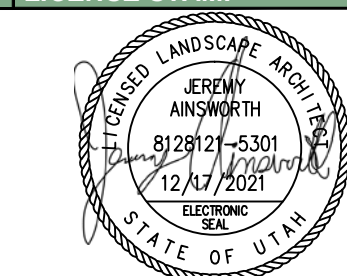
500'



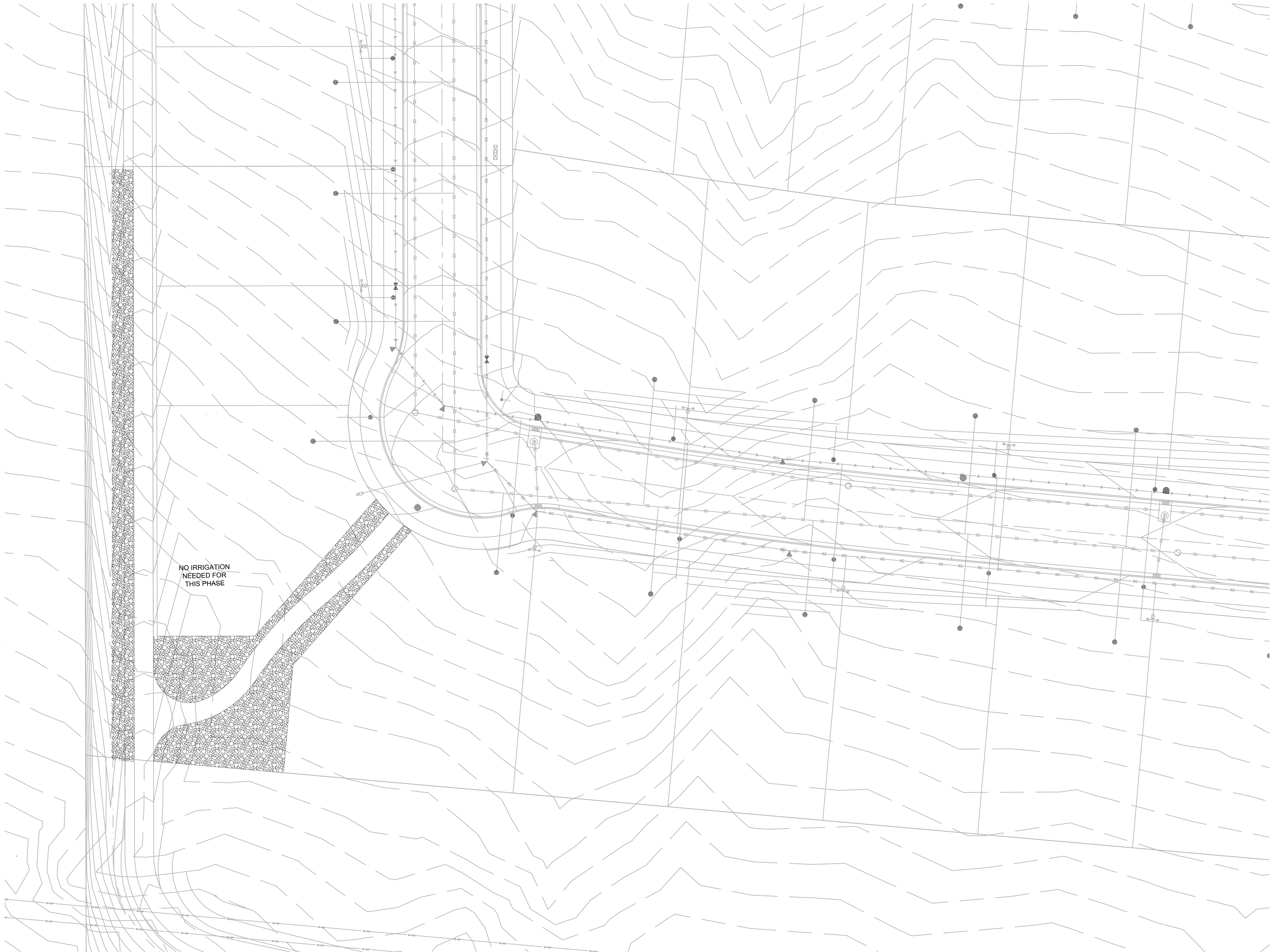
GRAPHIC SCALE: 1" = 25'



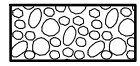
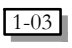
WILDFLOWER VILLAGE 4: J5
SARATOGA SPRINGS, UTAH



LANDSCAPE PLAN COVER
PRELIMINARY PLANS NOT
FOR CONSTRUCTION
LP-100



SITE MATERIALS LEGEND

SYMBOL	LANDSCAPE DESCRIPTION	QTY
	6" SOUTH TOWN COBBLE ROCK PLACED OVER WEED BARRIER FABRIC. COLOR TO BE LIGHT EARTH TONES TO CONTRAST OTHER ROCK. TO BE LEVEL WITH AND NOT MORE THAN 1" ABOVE ADJACENT CURBS, WALKS, OR CONCRETE. PLANTING EDGES, PROVIDE 7" DEPTH	5,590 sf
		

ISSUE DATE 12/17/2021		PROJECT NUMBER UT20120		PLAN INFORMATION		PROJECT INFORMATION		DEVELOPER / PROPERTY OWNER / CLIENT EDGE HOMES 13702 S. 200 W. B12 DRAPER, UT 84020 801-494-0150		LANDSCAPE ARCHITECT / PLANNER		LICENSE STAMP 		DRAWING INFO PM: JTA DRAWN: ACP CHECKED: JMA PLOT DATE: 12/17/2021	
NO. REVISION 1 XXXX 2 3 4 5 6 7		DATE XX-XX-XX		811 BLUE STAKES OF UTAH UTILITY NOTIFICATION CENTER, INC. 1-800-662-4111 www.bluestakes.org				WILDFLOWER VILLAGE 4: J3 SARATOGA SPRINGS, UTAH		LEI-ENGINEERING 3302 N. Main Street Spanish Fork, Ut. 84660 801-798-0555 ext. 226 www.lei-eng.com		 Landscape Architecture / Planning & Visualization 3450 N. TRIUMPH BLVD. SUITE 102 LEHI, UTAH 84043 (801) 960-2698 www.pkjdesigngroup.com		LANDSCAPE PLAN PRELIMINARY PLANS NOT FOR CONSTRUCTION LP-101	
															